

ADJACENT PROPERTIES

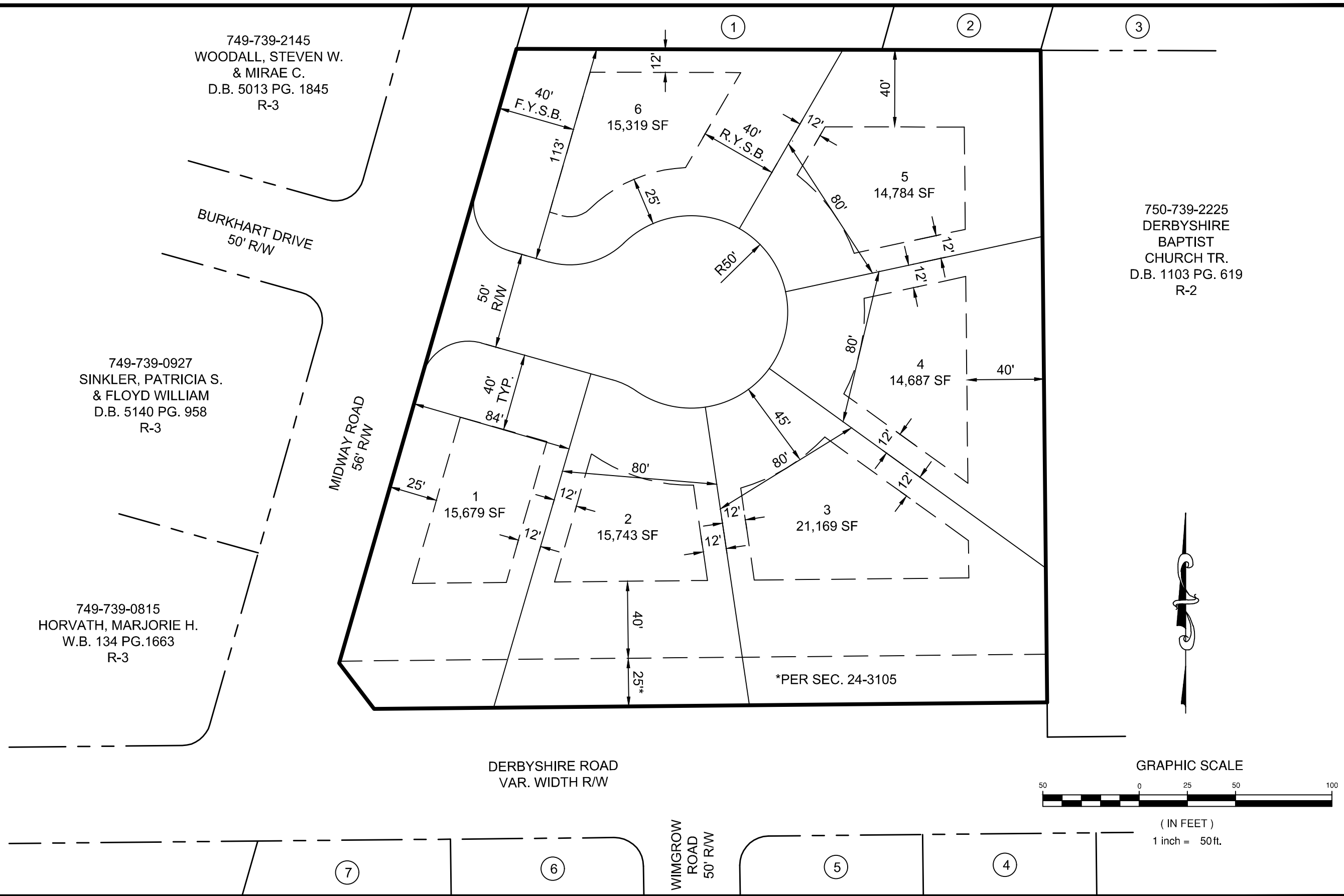
- ①
749-739-3946
GRAHAM, KRAIG S.
D.B. 6069 PG. 1711
R-3
- ②
749-739-5452
FRY, JAMES N.
& SYDNEY A.
D.B. 3132 PG. 1323
R-3
- ③
749-739-6450
FUENTES, YAMINA
D.B. 6040 PG. 272
R-3
- ④
749-738-5594
CRAWFORD, JOHN P.
& CATHARINE T. SLATER
D.B. 3711 PG. 1585
R-2
- ⑤
749-738-4793
TREVVETT, EARL M. JR.
& BETH ANN
D.B. 3441 PG. 1016
R-2
- ⑥
749-738-3293
BENSON, AMANDA M.
& JOHN A. MAHLE
D.B. 5782 PG. 679
R-2
- ⑦
749-738-2194
PARNAVAS, GEORGE
D.B. 5424 PG. 969
R-2

749-739-2145
WOODALL, STEVEN W.
& MIRAE C.
D.B. 5013 PG. 1845
R-3

749-739-0927
SINKLER, PATRICIA S.
& FLOYD WILLIAM
D.B. 5140 PG. 958
R-3

749-739-0815
HORVATH, MARJORIE H.
W.B. 134 PG.1663
R-3

750-739-2225
DERBYSHIRE
BAPTIST
CHURCH TR.
D.B. 1103 PG. 619
R-2



Draper Aden Associates
Engineering • Surveying • Environmental Services
1030 Wilmer Avenue, Suite 100 Blacksburg, VA Raleigh, NC
Richmond, VA 23227 Charlottesville, VA Fayetteville, NC
804-264-2228 Fax: 804-264-8773 Hampton Roads, VA Virginia Beach, VA

DESIGNED EEH
DRAWN EEH
CHECKED CHK
DATE 07.11.2022

CONCEPT PLAN
CARTER FARM RESUBDIVISION
TUCKAHOE DISTRICT, HENRICO COUNTY, VIRGINIA

SCALE: 1" = 50'
PROJECT: 495106

EXHIBIT
B

P:\2022\TRC 495106\03-SD\ICAD\Carter Farm Concept Plan.dwg July 11, 2022 3:43:19 PM