

July 18, 2022

Andrew M. Condlin
Richmond Office
(804) 977-3373 (direct)
acondlin@rothjackson.com

VIA U. S. MAIL

To Adjacent and Surrounding Property Owners

Re: Community Meeting – August 1, 2022 6 pm – Rezoning request

Dear Ladies and Gentlemen:

We are writing again on the Beach Road WW LLC rezoning application with Chesterfield County, for the approximately 269 acres located adjacent to Brandy Oaks subdivision. We would like to have a 2nd community meeting to review revisions of the case and, responses to questions that were raised in the meeting on June 15th.

The community meeting will be held on Monday, August 1st at 6 p.m. at Second Branch Baptist Church (12217 2nd Branch Rd, Chesterfield, VA 23838).

Further, you may also access information and exhibits at our RVA Zoning website (<https://www.rvazoning.com>) under Find Your Case, then Beach Road. You will also be able to leave a comment that will be forwarded to me as well as the case manager, with the County, Summer Morris.

In the meantime, should you have any questions my contact information is (804) 977-3373 or acondlin@rothjackson.com. You may also contact Ms. Morris at 804-751-4151 or MorrisSu@Chesterfield.gov or the Matoaca District Planning Commissioner, Tommy Owens, at 804-869-2214 or OwensTommy@chesterfield.gov.

Sincerely,



Andrew M. Condlin

cc: Ms. Summer Morris
Mr. Tommy Owens
Beach Road WW LLC

Enclosure

{01427181;v2}

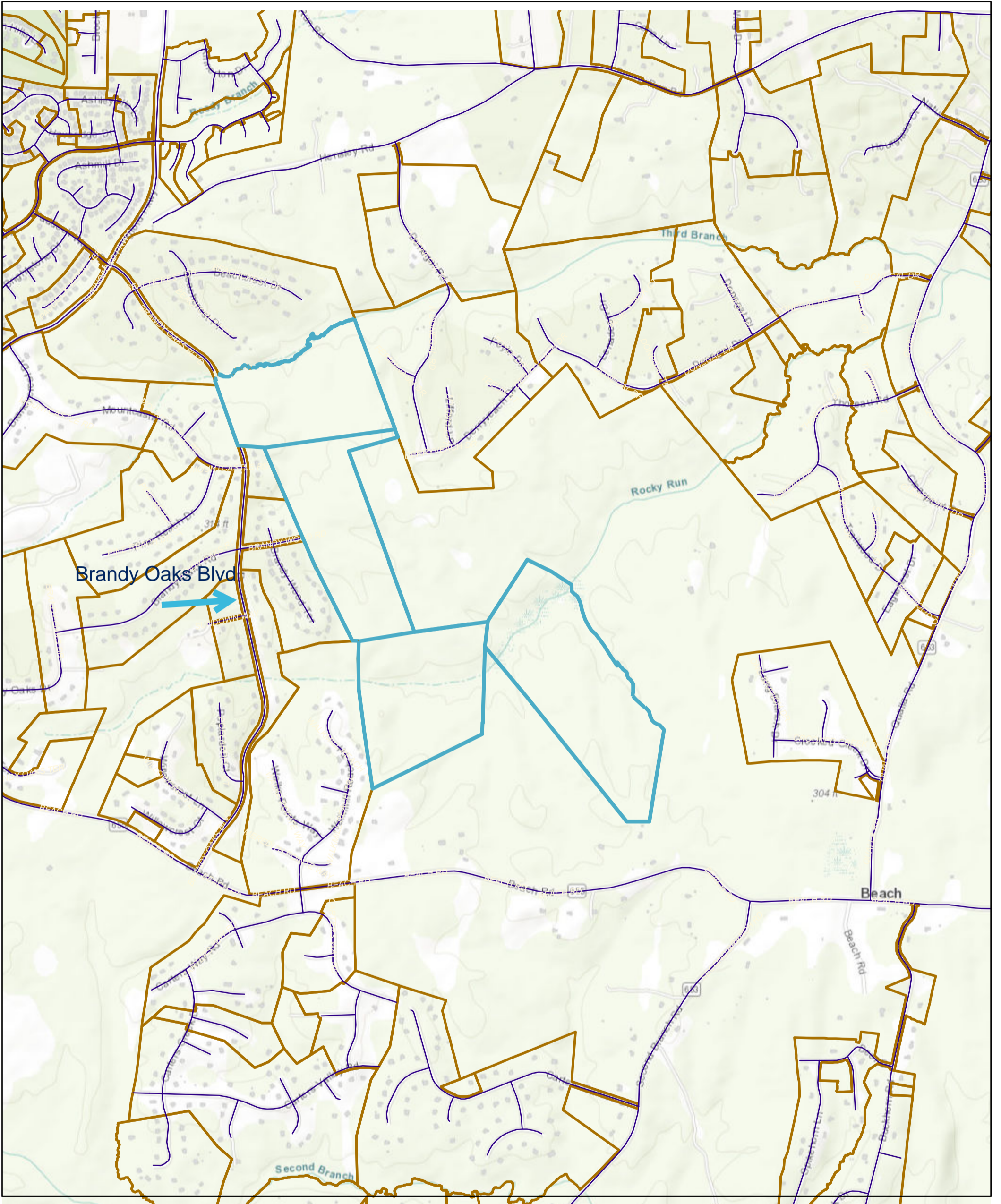
RICHMOND

1519 Summit Avenue, Suite 102, Richmond, VA 23230
P: 804-441-8440 F: 804-441-8438

TYSONS CORNER





8200 Greensboro Drive, Suite 820, McLean, VA 22102
P: 703-485-3535 F: 703-485-3525

Beach Road Proposal

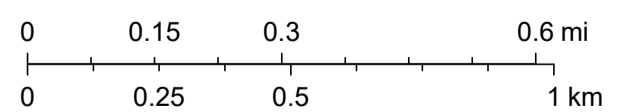


6/3/2022, 11:37:32 AM

Lines

-  Override 1
-  Override 2
-  Subdivisions
-  Municipal Boundary

1:18,056



Sources: Esri, HERE, Garmin, Intermap, increment P Corp., GEBCO, USGS, FAO, NPS, NRCAN, GeoBase, IGN, Kadaster NL, Ordnance Survey, Esri Japan, METI, Esri China (Hong Kong), (c) OpenStreetMap contributors, and the GIS User Community