

Andrew M. Condlin

Richmond Office

(804) 977-3373 (direct)

acondlin@rothjackson.com

October 10, 2023

VIA U.S. MAIL

To Interested and Adjacent Neighbors:

Re: 2000 Maywill, LLC – REZ2023-00025 and PUP2023-00010
2015 & 2103 Staples Mill Road and 2000 Maywill Street

Dear Ladies & Gentlemen:

My firm is representing 2000 Maywill, LLC in the rezoning request of approximately 29+/- acres, shown on the attached map. This property is part of the existing Anthem site on Staples Mill Road between West Broad Street, Maywill Street and Thalbro Street. An application has been filed and is under review by the County of Henrico, Virginia, to amend the existing proffers on the B-3C portion of the property and request a Provisional Use Permit to allow a mixed use development that will include the existing office buildings.

We would like the opportunity to share with you our proposal and the details regarding 2000 Maywill. Accordingly, we will be hosting a community meeting on October 24, 2023, at 6:30 p.m. at 2221 Edward Holland Drive Henrico Virginia 23230 in the 1st Floor Meeting Room.

You may also find information related to the proposal at www.rvazoning.com and then select 2000 Maywill, LLC under “Find Your Case”. There is a comments tab on the website where you may leave a comment as well.

Sincerely,



Andrew M. Condlin

Enclosure

{01571077;v1}

RICHMOND

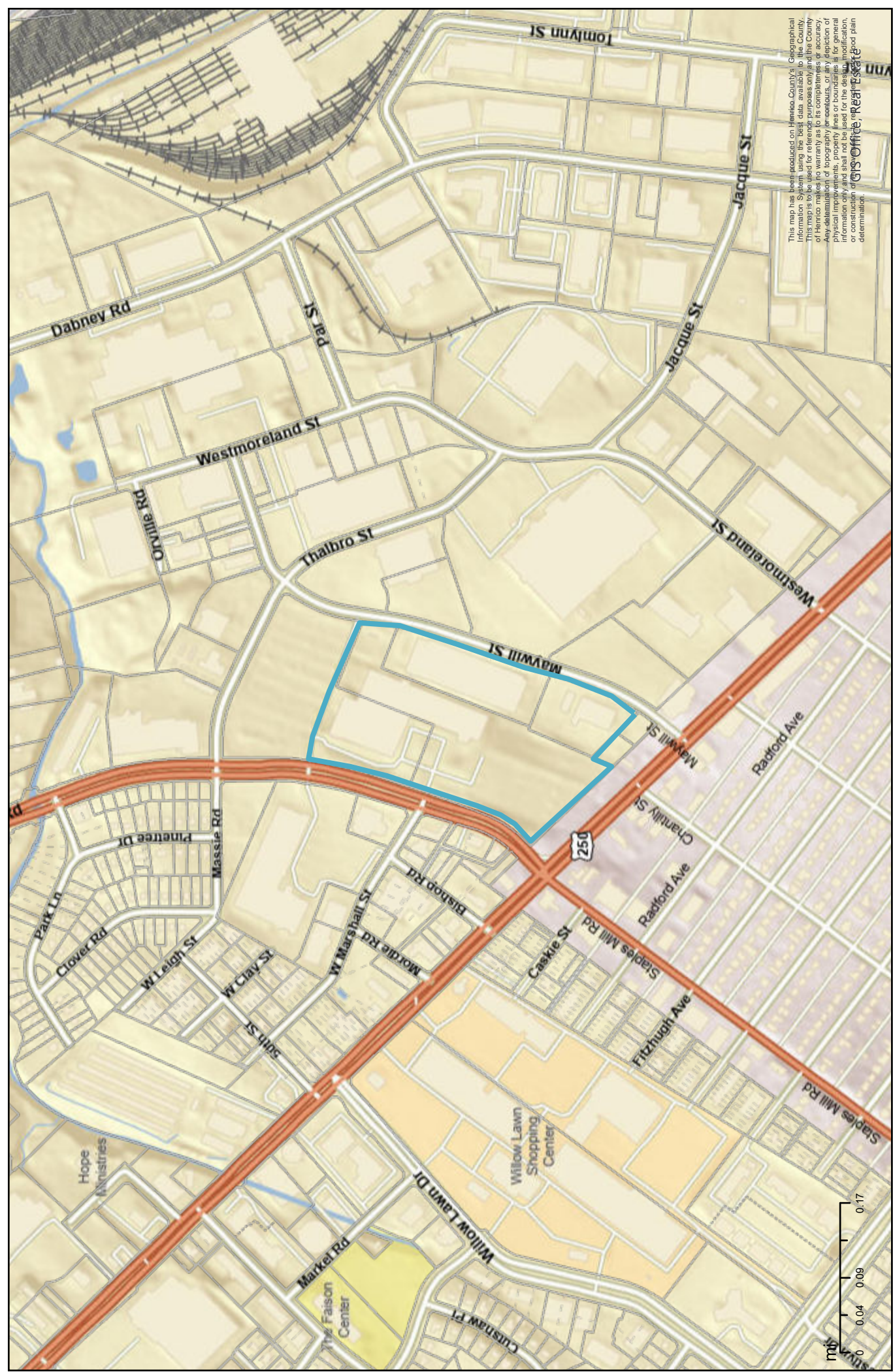
1519 Summit Avenue, Suite 102, Richmond, VA 23230

P: 804-441-8440 F: 804-441-8438

TYSONS CORNER

8200 Greensboro Drive, Suite 820, McLean, VA 22102

P: 703-485-3535 F: 703-485-3525



This map has been produced on Henrico County's Geographical Information System, using the best data available to the County. This map is to be used for reference purposes only and the County of Henrico makes no warranty as to its completeness or accuracy. Any determination of topography, easements, or any depiction of public utility lines, or any other information, is for informational purposes only and shall not be used for the design, modification, or construction of any project without the assistance of a professional engineer or other qualified professional. GIS Office, Real Estate



2000 Maywill Vicinity Map

Date: 5/16/2023

Author:

