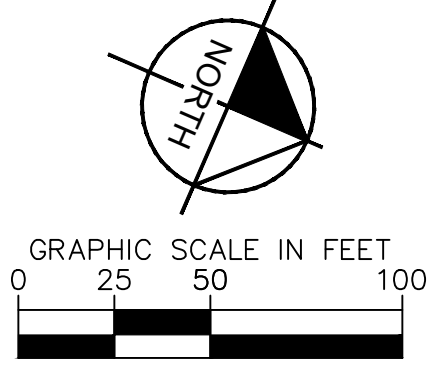
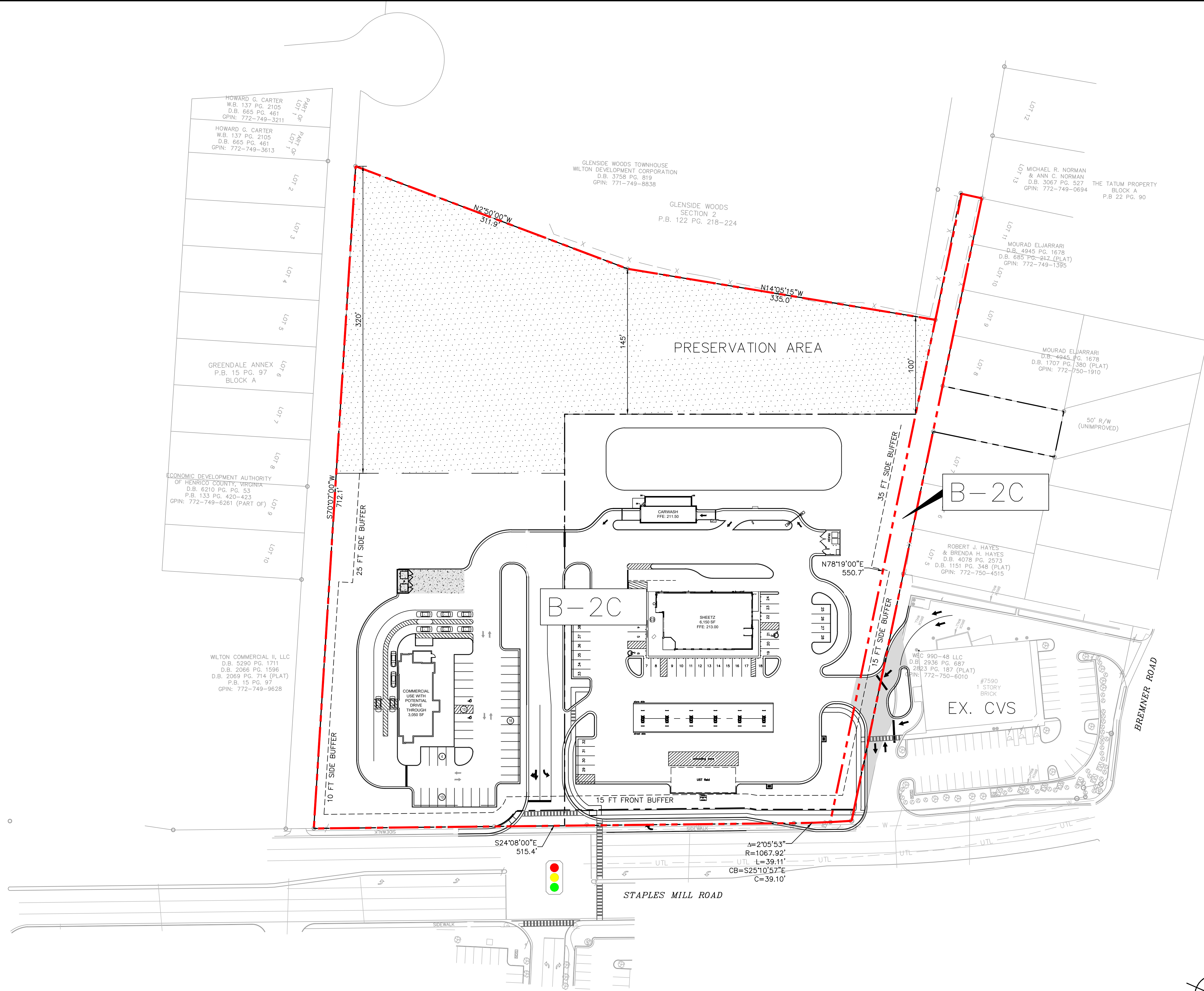


This document, together with the concepts and designs presented herein, is intended only for the specific purpose and client for which it was prepared. Reuse of and improper reliance on this document without written authorization and adaptation by Kimley-Horn and Associates, Inc. shall be without liability to Kimley-Horn and Associates, Inc.



**COMMERCIAL DEV. @
STAPLES MILL AND
BREMNER**

ZONING EXHIBIT

KHA PROJECT	113160054
DATE	10/06/2022
SCALE	AS SHOWN
DESIGNED BY	STM
DRAWN BY	STM
CHECKED BY	LPA

Kimley»Horn
 © 2022 KIMLEY-HORN AND ASSOCIATES, INC.
 1700 WILLOW LAWN DR., SUITE 200, RICHMOND, VA 23230
 PHONE: 804-673-3882
 WWW.KIMLEY-HORN.COM

No.	REVISIONS	DATE	BY

HENRICO COUNTY VA