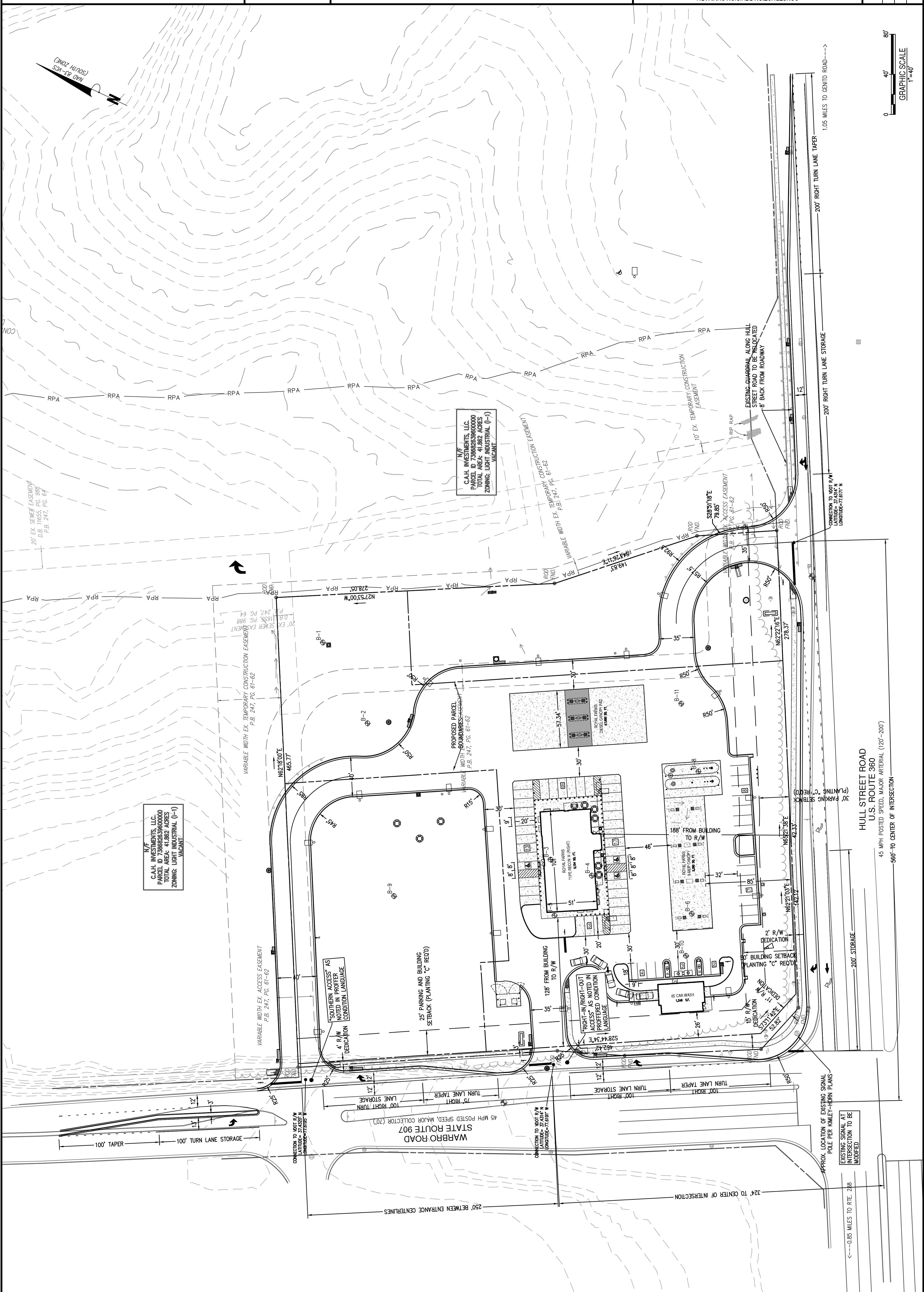


DRAFT

COVER HILL MAGISTERIAL DISTRICT
ROYAL FARMS STORE #503
 EXHIBIT A - CONCEPTUAL SITE PLAN
 CHESTERFIELD COUNTY, VIRGINIA

NO.	DATE	DESCRIPTION



N/F
 CALH INVESTMENTS, LLC
 PARCEL ID 738682639600000
 TOTAL AREA: 41.862 ACRES
 ZONING: LIGHT INDUSTRIAL (I-1)
 VACANT

N/F
 CALH INVESTMENTS, LLC
 PARCEL ID 738682639600000
 TOTAL AREA: 41.862 ACRES
 ZONING: LIGHT INDUSTRIAL (I-1)
 VACANT

SOUTHERN ACCESS AS NOTED IN PROFFER CONDITION LANGUAGE

RIGHT-IN RIGHT-OUT ACCESS AS NOTED IN PROFFER CONDITION LANGUAGE

APPROX. LOCATION OF EXISTING SIGNAL POLE PER KIMLEY-HORN PLANS
 EXISTING SIGNAL AT INTERSECTION TO BE MODIFIED

HULL STREET ROAD
 U.S. ROUTE 360
 45 MPH POSTED SPEED, MAJOR ARTERIAL (120'-200')
 560' TO CENTER OF INTERSECTION

GRAPHIC SCALE
 1"=40'
 0 40' 80'