

Andrew M. Condlin

Richmond Office

(804) 977-3373 (direct)

acondlin@rothjackson.com

March 27, 2022

VIA ELECTRONIC MAIL

Interested and Adjacent Neighbors

Re: REZ2023-00002

Canterbury Development Group, LLC – Walnut Avenue near Savannah Avenue

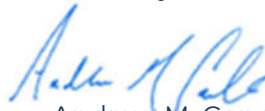
Dear Ladies and Gentlemen:

My firm is assisting Canterbury Development Group, LLC with the development of townhomes at the intersections of Walnut Avenue and Savannah Avenue that encompasses approximately 5.69 acres, as shown on the attached map. The property is currently zoned a combination of industrial (3.72 acres) and residential (1.97 acres) and we are seeking to provide for a residential community on the entire property.

We have scheduled a second community meeting for 6:30 p.m. on April 3, 2023, at the Sharon Baptist Church, located at 500 E. Laburnum Avenue, Henrico, Virginia 23222, to provide you with more information regarding the revisions to the proposed development.

In the meantime, should you have any questions or concerns, my contact information is (804) 977-3373 or acondlin@rothjackson.com.

Sincerely,



Andrew M. Condlin

{01506387;v2}

RICHMOND

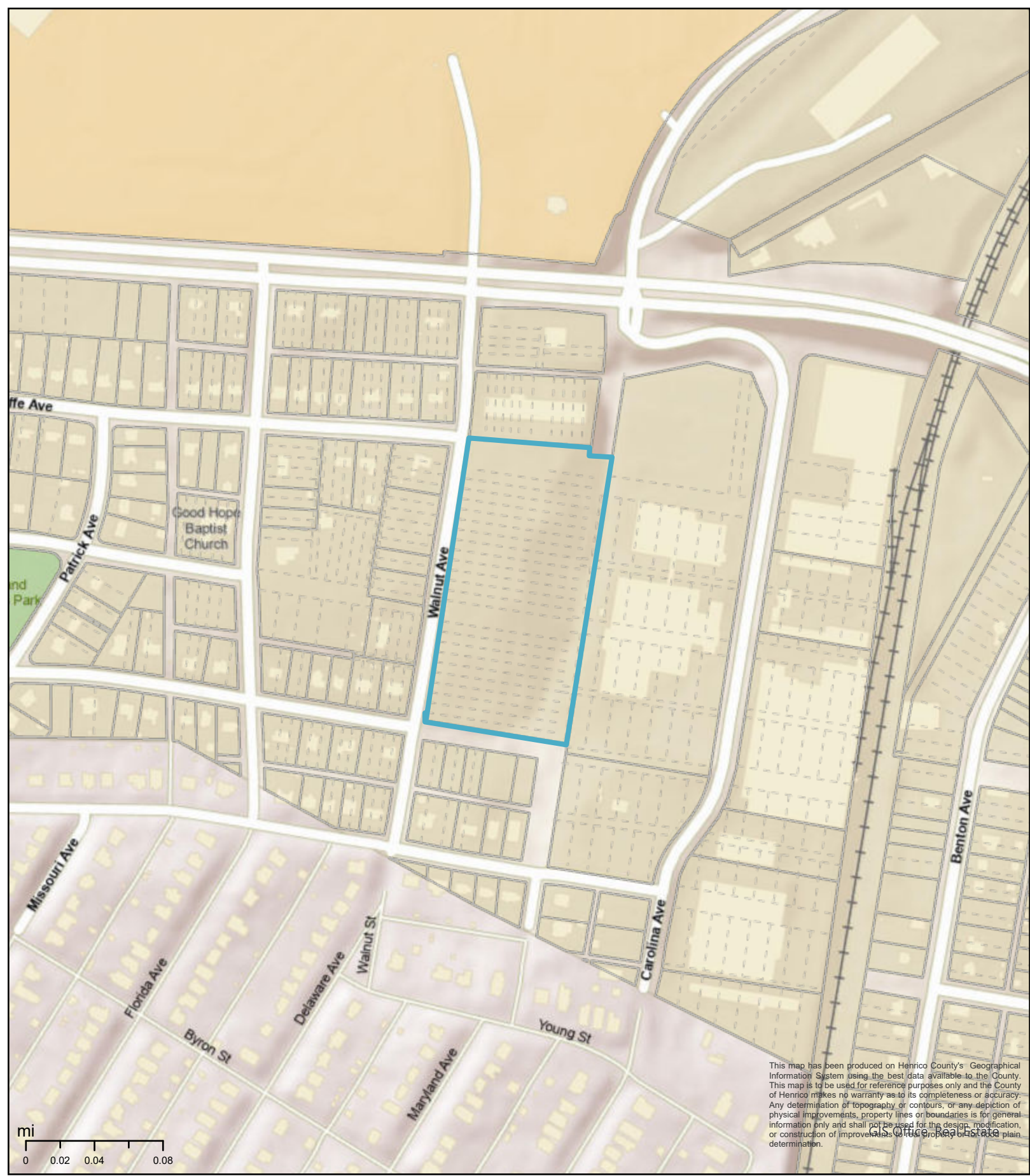
1519 Summit Avenue, Suite 102, Richmond, VA 23230

P: 804-441-8440 F: 804-441-8438

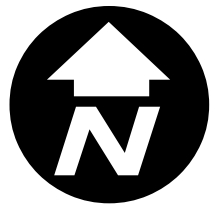
TYSONS CORNER

8200 Greensboro Drive, Suite 820, McLean, VA 22102

P: 703-485-3535 F: 703-485-3525



This map has been produced on Henrico County's Geographical Information System using the best data available to the County. This map is to be used for reference purposes only and the County of Henrico makes no warranty as to its completeness or accuracy. Any determination of topography or contours, or any depiction of physical improvements, property lines or boundaries is for general information only and shall not be used for the design, modification, or construction of improvements or for any other purpose without a plain determination.



Walnut Avenue Vicinity Map

Author:

Date: 12/15/2022

