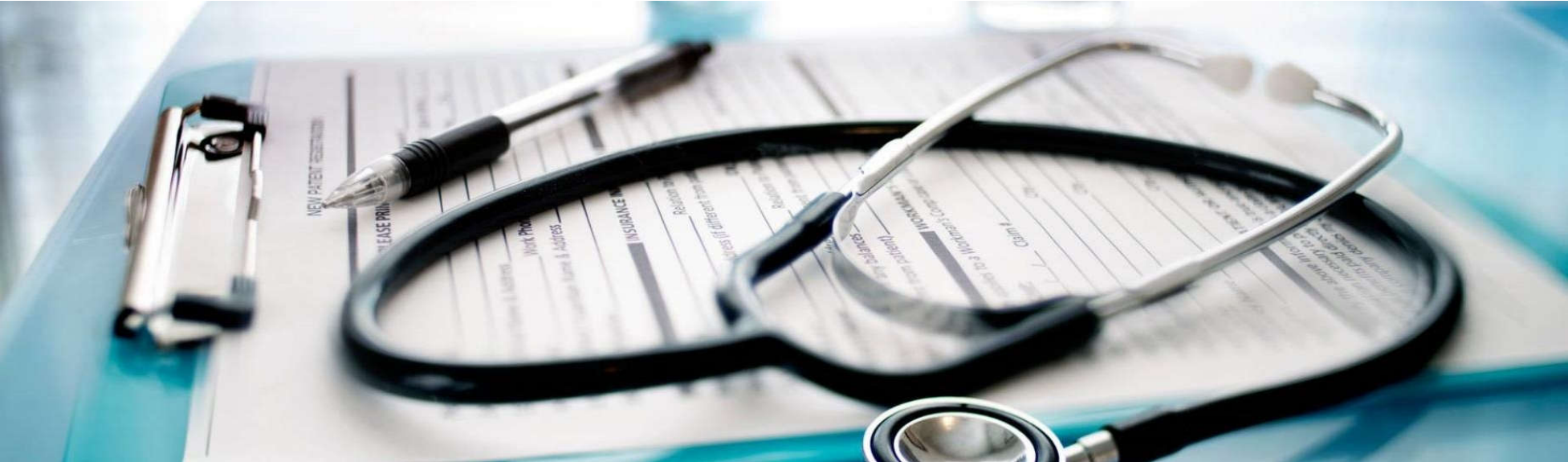


---

**COMMUNITY MEETING  
UPDATE ON HCA PROPOSAL FOR HANOVER COUNTY  
JULY 31, 2023**




---

# AGENDA

- Introductions
- Property Information / High-Level Proposal Review
- Proposal Specifics
- Process
- Traffic Impact Analysis (TIA) Summary

# HCA Virginia: Healthcare is Local



**MORE THAN  
\$5.5 BILLION**

economic impact contributed annually to the Commonwealth from the operations of our:

- 14 hospitals – 3,313 beds
- 27 outpatient centers
- 7 freestanding emergency rooms
- 13 urgent care centers

\$179 million in capital invested in 2022




**WE DELIVERED  
2.6 MILLION**

patient experiences

in 2022 including more than:

- 559,400 emergency room visits
- 12,840 babies delivered
- 40,134 behavioral health visits



**MORE THAN  
16,800 EMPLOYEES**

\$1.3 billion in payroll and benefits


One of the largest private employers in the Commonwealth with more than:

- 4,500 nurses
- 2,980 affiliated physicians
- 190 Graduate Medical Education residents



**IN 2022 WE DELIVERED  
\$76.1 MILLION**

in charity and uncompensated care at cost



**\$228.4 MILLION**

In state\* and local taxes were incurred in 2022

\*includes provider tax

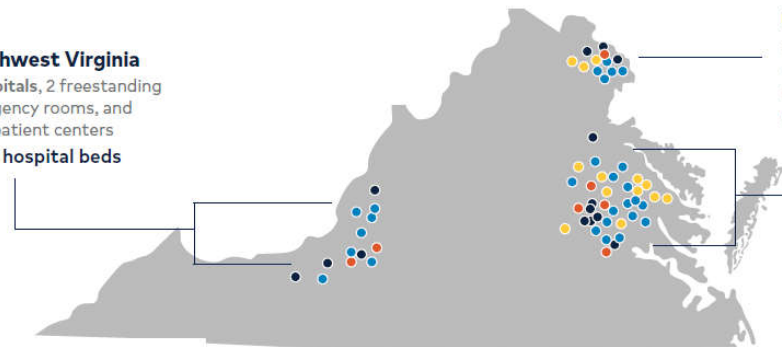


901 EAST CARY STREET, SUITE 2100, RICHMOND, VIRGINIA 23219 | [HCAVIRGINIAHEALTHSYSTEM.COM](http://HCAVIRGINIAHEALTHSYSTEM.COM)

**Southwest Virginia**  
4 hospitals, 2 freestanding emergency rooms, and 7 outpatient centers  
1,004 hospital beds

**Northern Virginia**  
3 hospitals, 1 freestanding emergency room, 5 outpatient centers, and 3 urgent care centers  
500 hospital beds

**Central Virginia**  
7 hospitals, 4 freestanding emergency rooms, 15 outpatient centers, and 10 urgent care centers  
1,809 hospital beds



● Hospital   ● Freestanding Emergency Center   ● Urgent Care Centers   ● Outpatient Centers

# A History of Firsts

*Serving the Community for 146 years*



**1877**  
**Retreat**

Established

Joined HCA in

**1995**

**1882**  
**Parham**

Established

Joined HCA in

**2001**

**1978**  
**Henrico**

Established

Joined HCA in

**1983**

HENRICO, PARHAM & RETREAT DOCTORS' HOSPITAL | ORIENTATION

- 2000**  
1<sup>st</sup> Robotic Assisted Case in the US after FDA Approval
- 2001**  
Nissen fundoplication & pyloroplasty in the US
- 2002**  
Minimally invasive single-site robotic surgery in Mid Atlantic region
- 2003**  
Gyn recon & robotic supracervical hysterectomy in Virginia
- 2012**  
1<sup>st</sup> TAVR in central Virginia
- 2017**  
Single-incision Lap Chole and hysterectomy in Mid-Atlantic
- 2019**  
Urological surgery with single-port technology in VA
- 2020-2021**  
CA Mural project, Encompass, and CT&I
- 2023**  
Augmented reality spine surgery in Richmond

# Henrico, Parham & Retreat: Campus Overview

Henrico

● Women's & Neonate | Trauma | Cardiovascular | Neurosciences |  
Oncology | Transplant | Hanover ED ●

Parham

● Orthopedics | Spine | Bariatrics |  
Inpatient Rehab | Behavioral Health ●

Retreat

● Urology | Behavioral Health | Wound Care ●

**24K+**  
*Admits*

**15K+**  
*Surgeries*

**4K+**  
*Deliveries*

**107K+**  
*ED Visits*

**1,200+**  
*External  
Transfers In*

**1,700+**  
*System  
Transfers*

# HOSPITAL | PROPOSED SITE

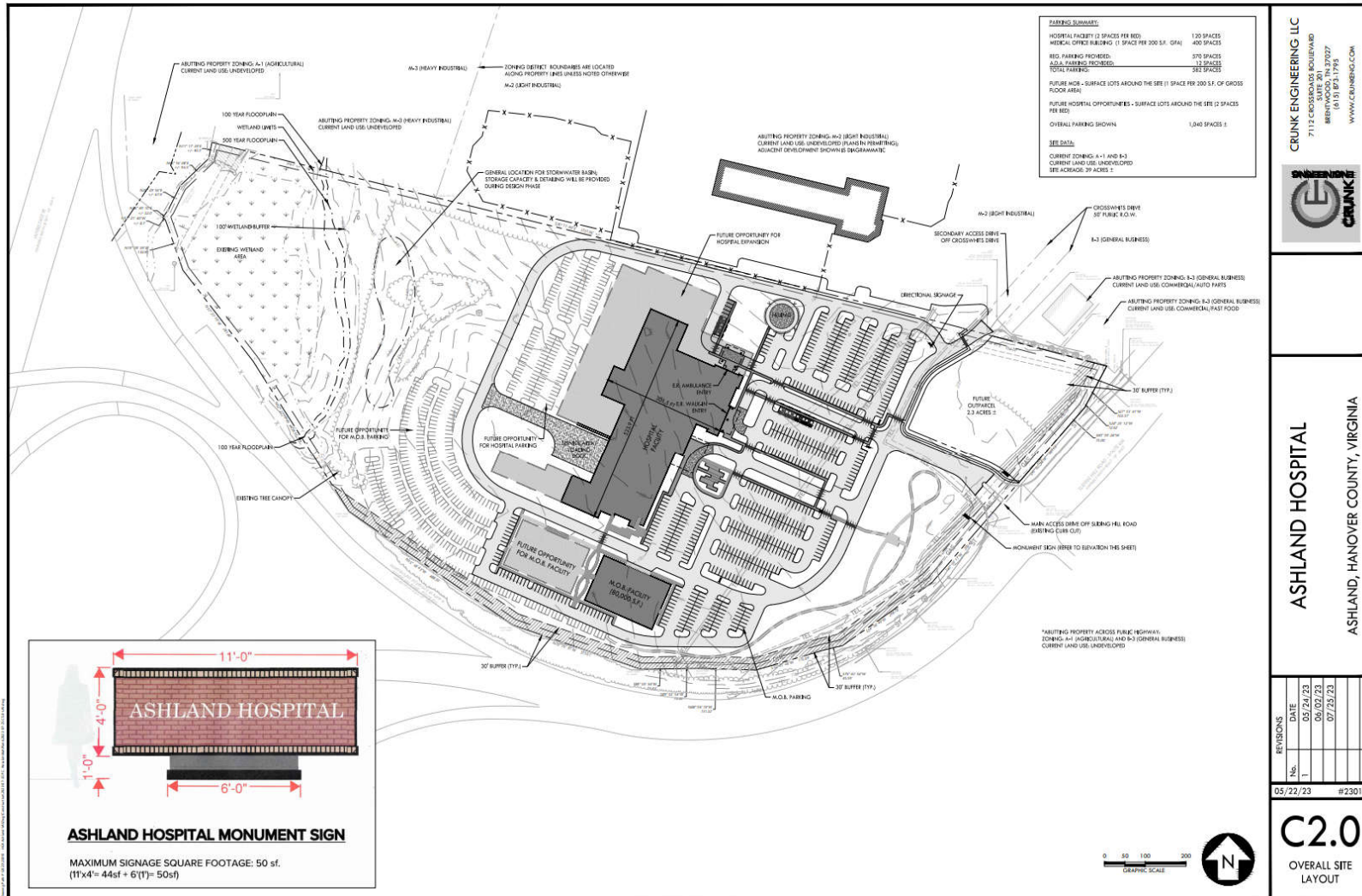


# DIFFERENT VIEW



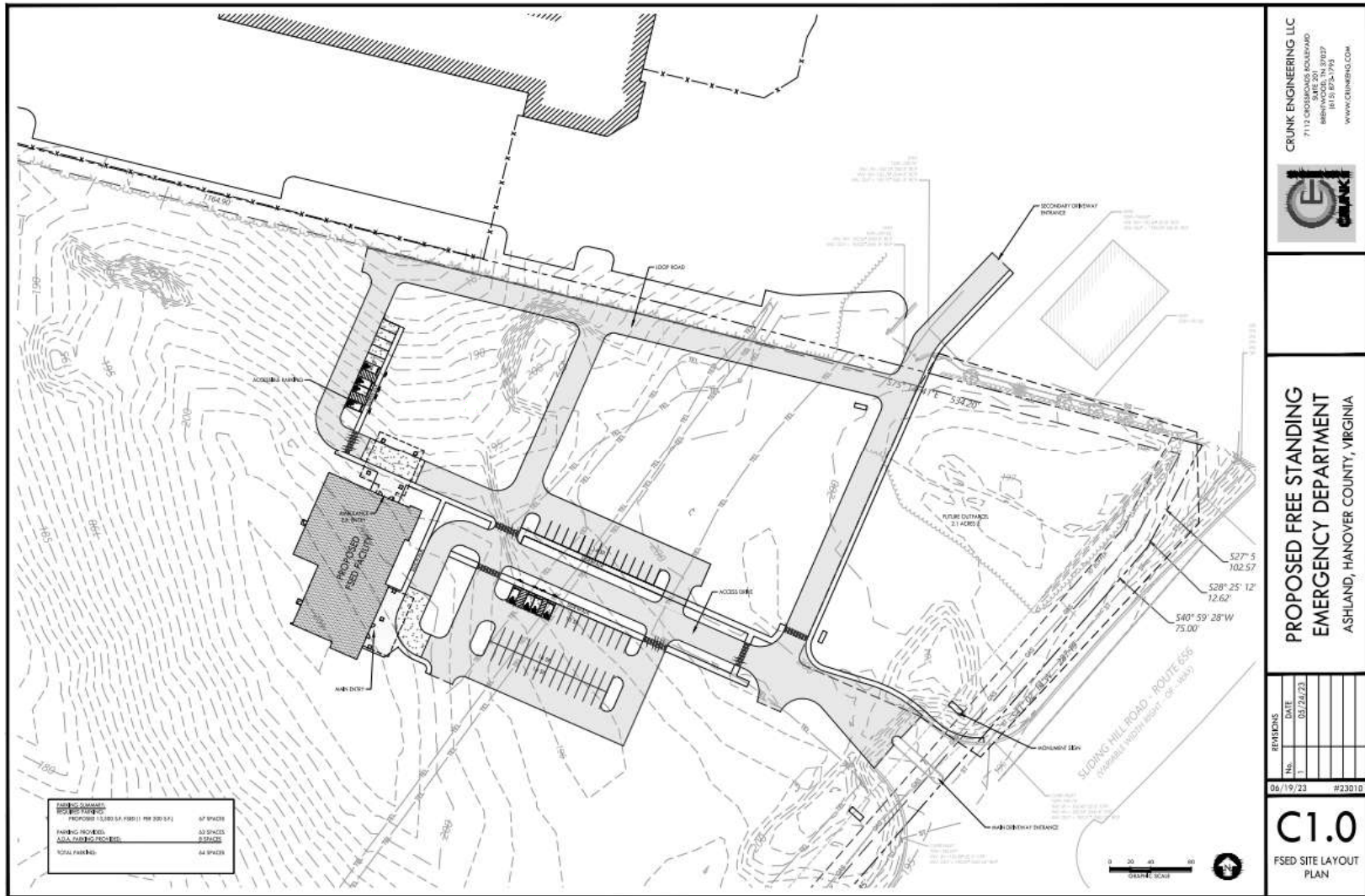
HANOVER HOSPITAL OVERVIEW

# Hospital Alternative





# Emergency Department Alternative

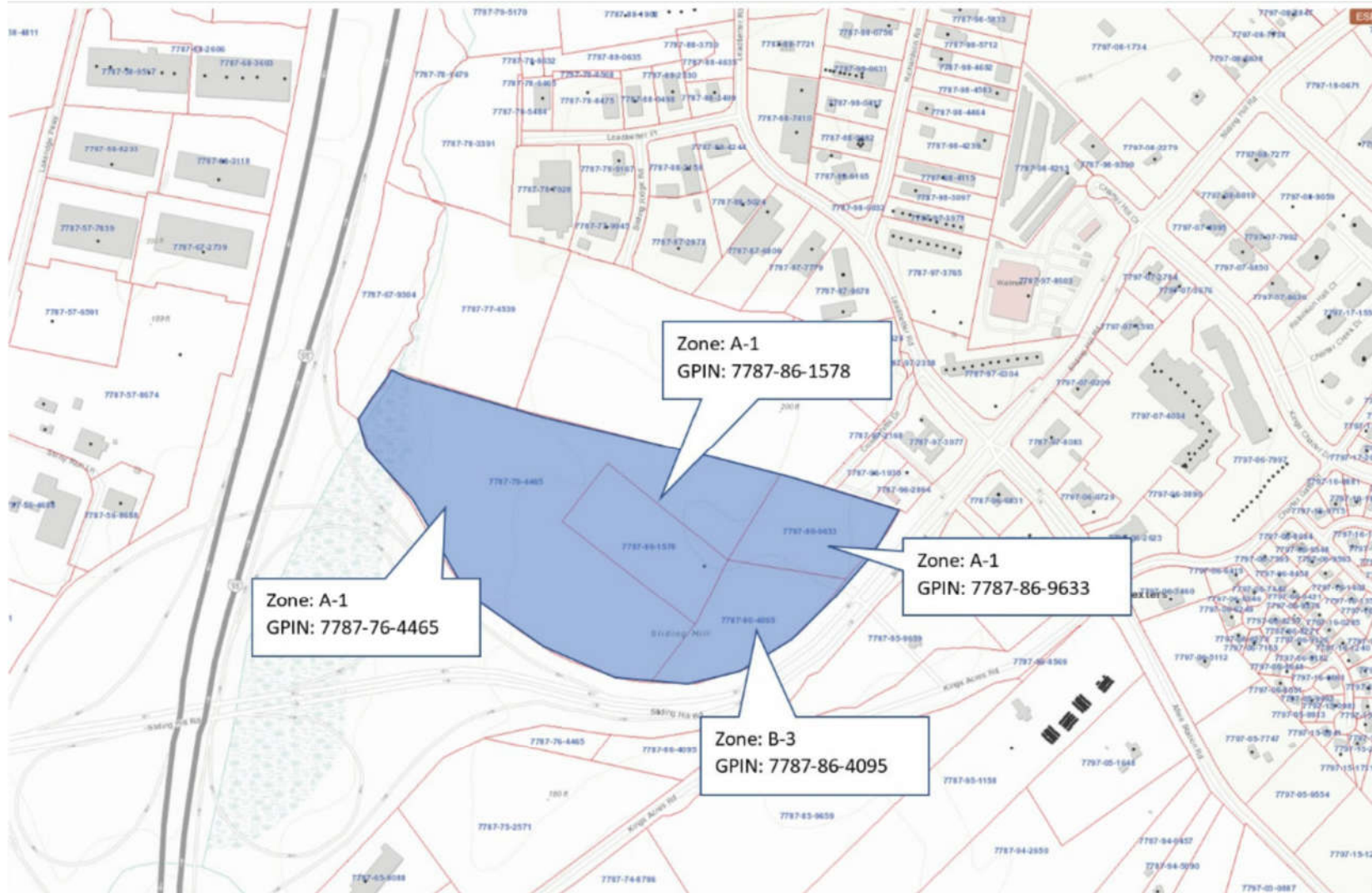


---

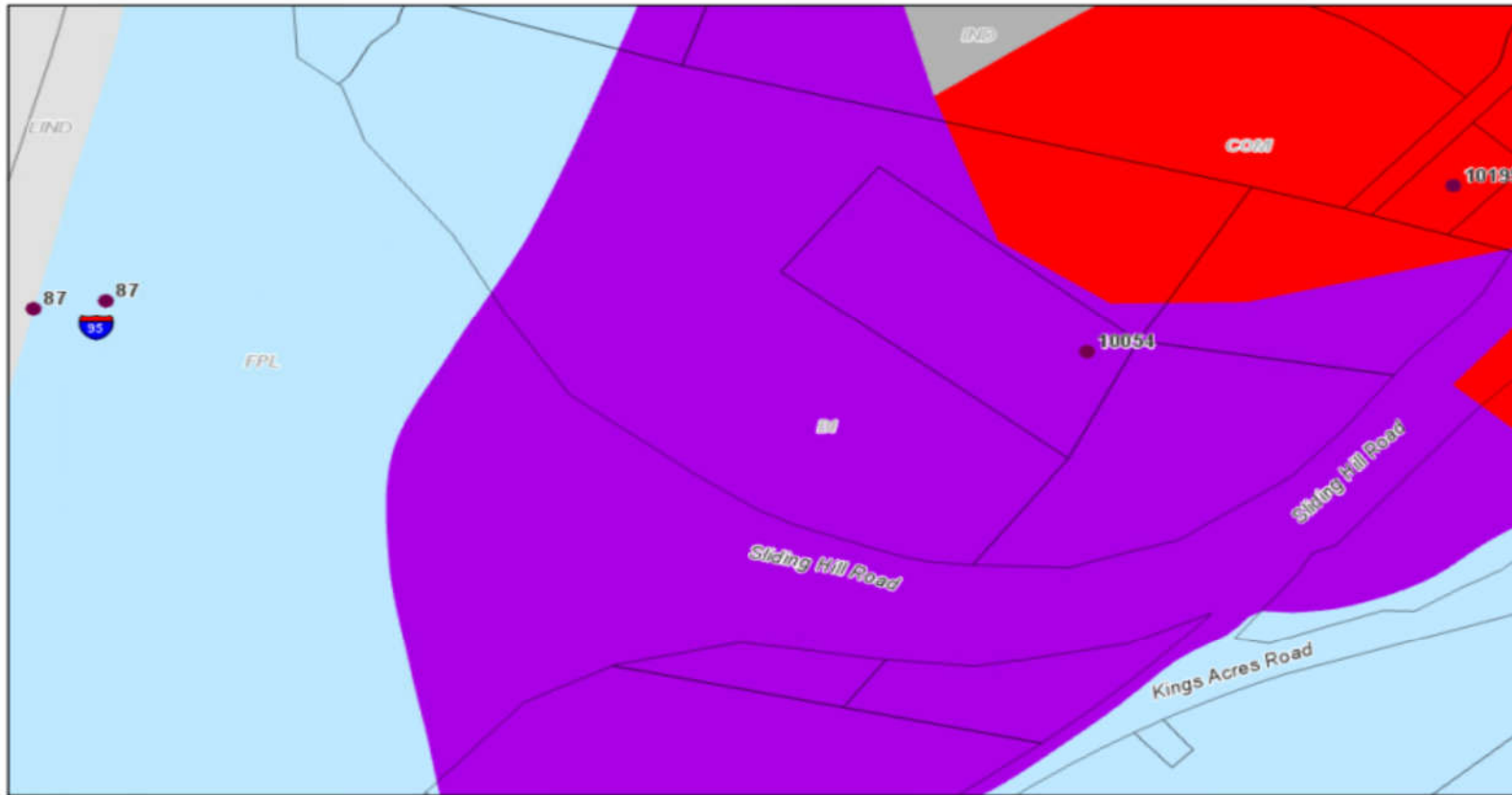
## CERTIFICATE OF PUBLIC NEED (“COPN”)

- State regulatory process for certain new medical care facilities and services
- COPN process is overseen by the Virginia Department of Health and is separate from County rezoning process
- Two COPN applications filed:
  - Hospital
  - Freestanding Emergency Department and Imaging Center

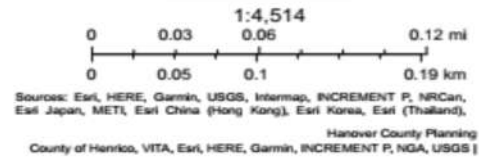
# Vicinity Map



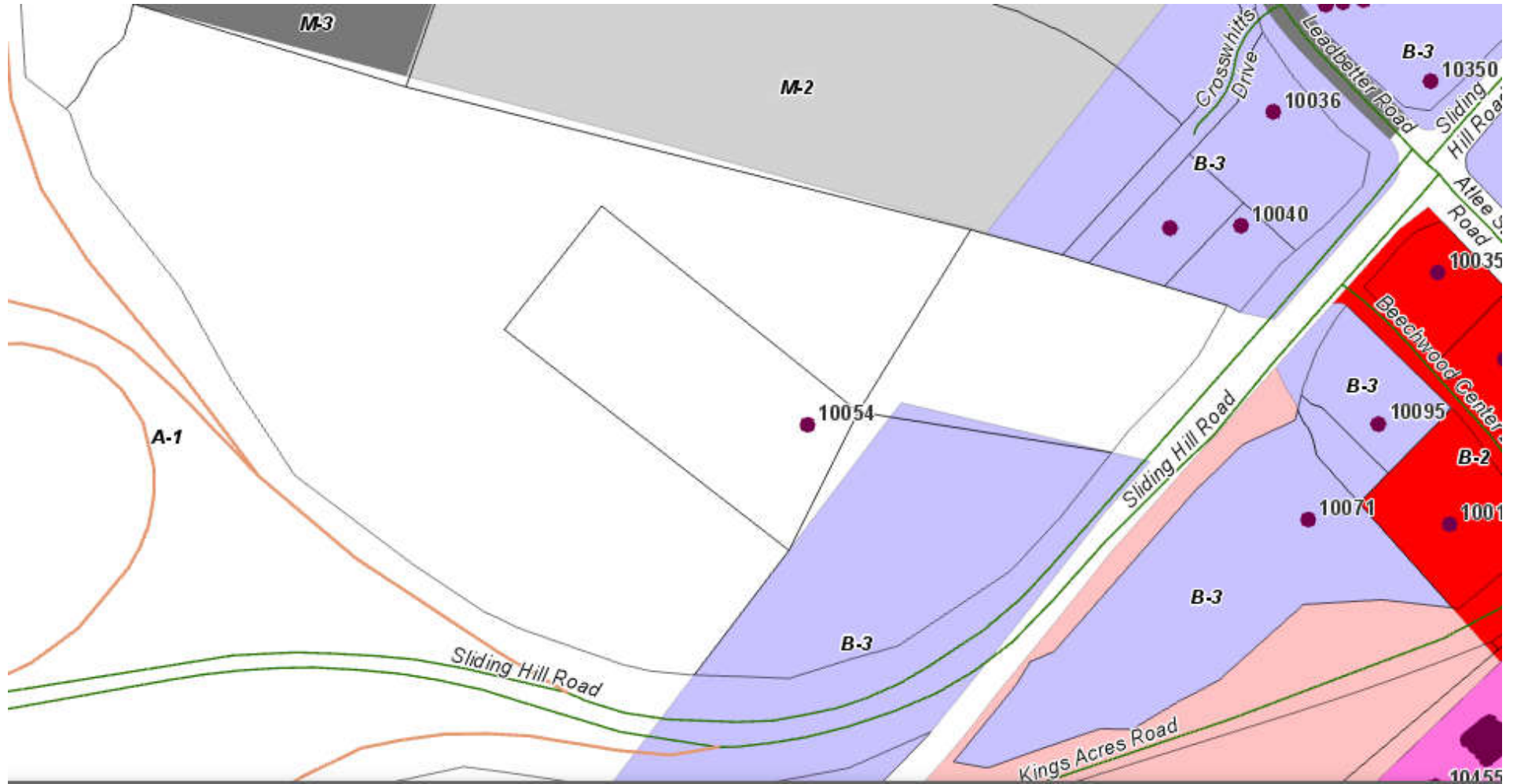
# Comprehensive Plan



6/22/2023, 4:43:57 PM

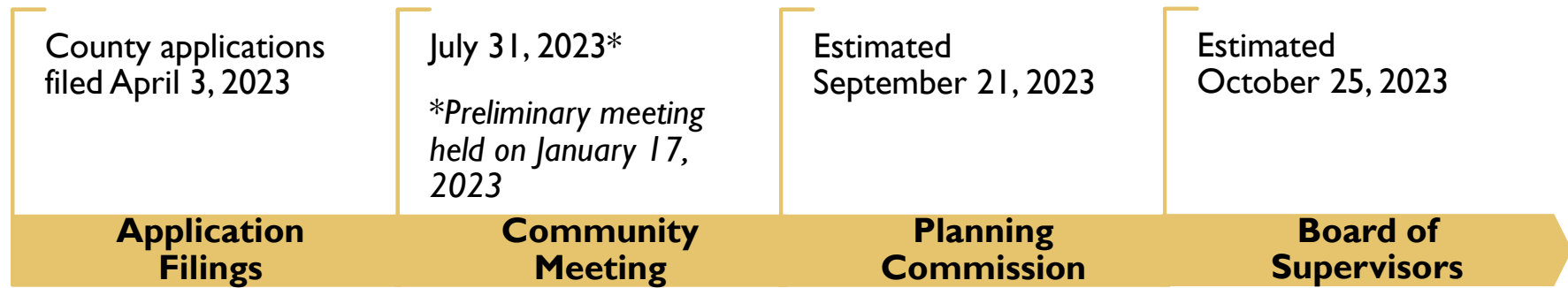


# Zoning Map

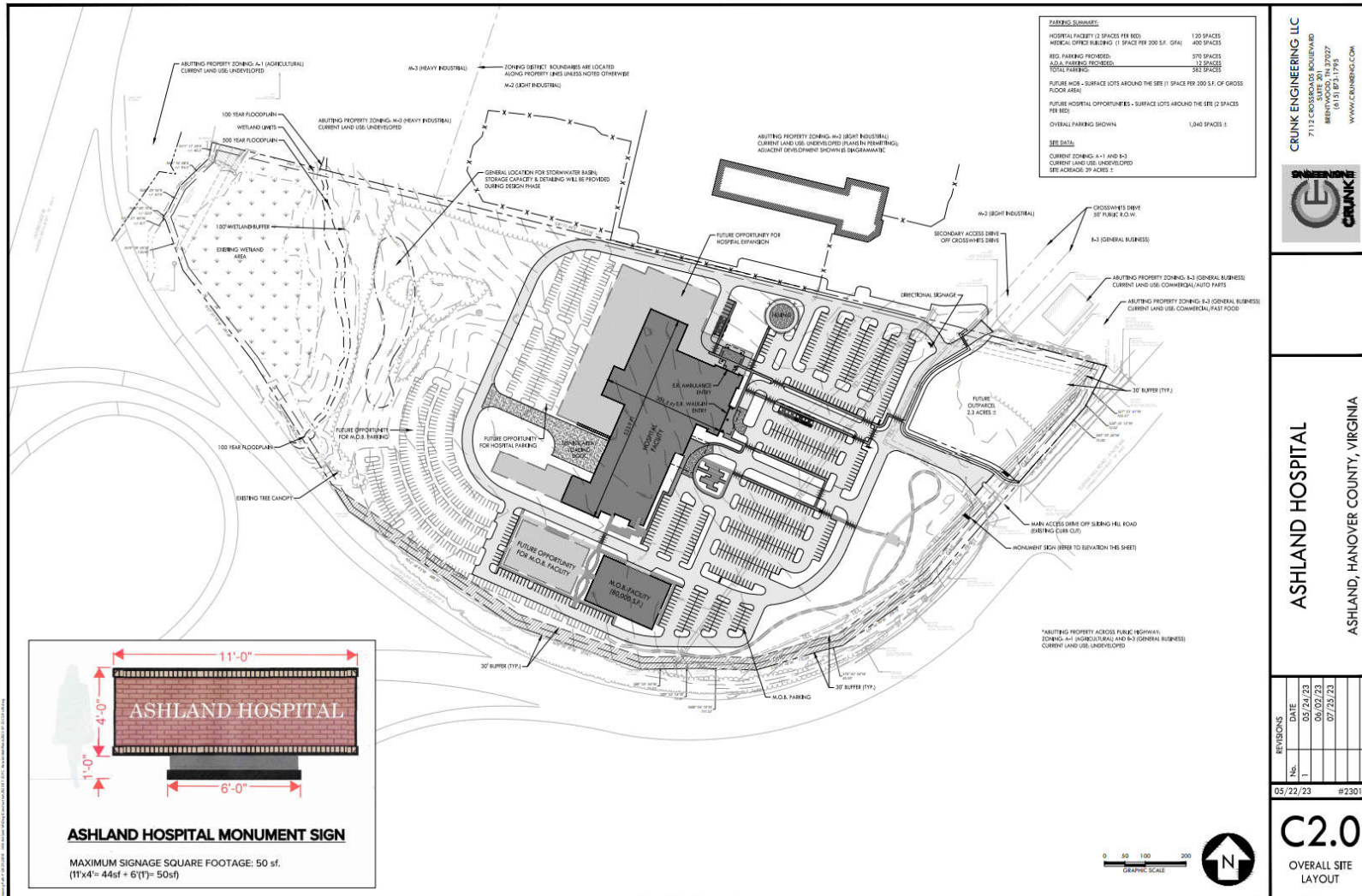


---

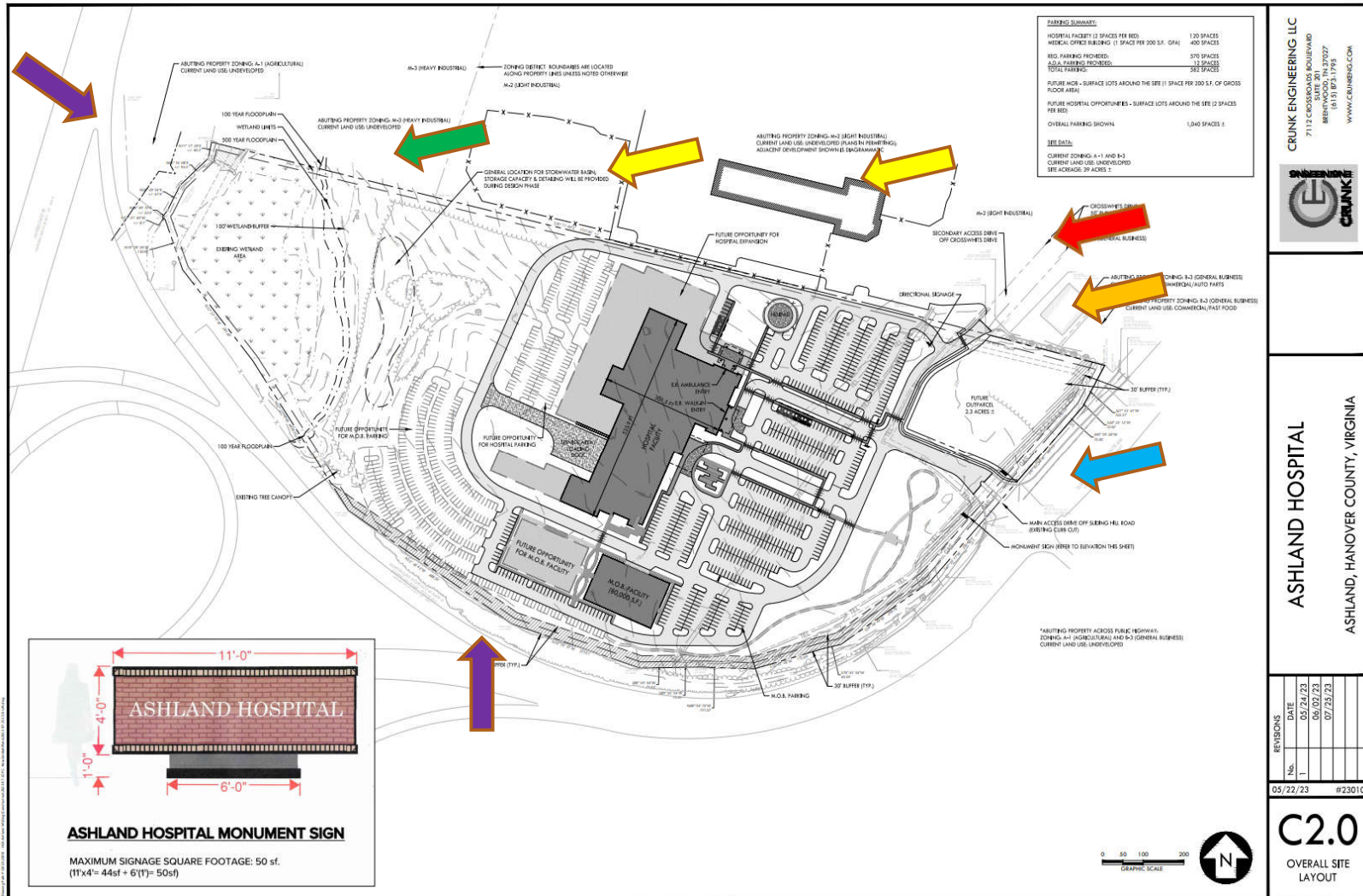
## COUNTY PROCESS TIMELINE



# Hospital Alternative

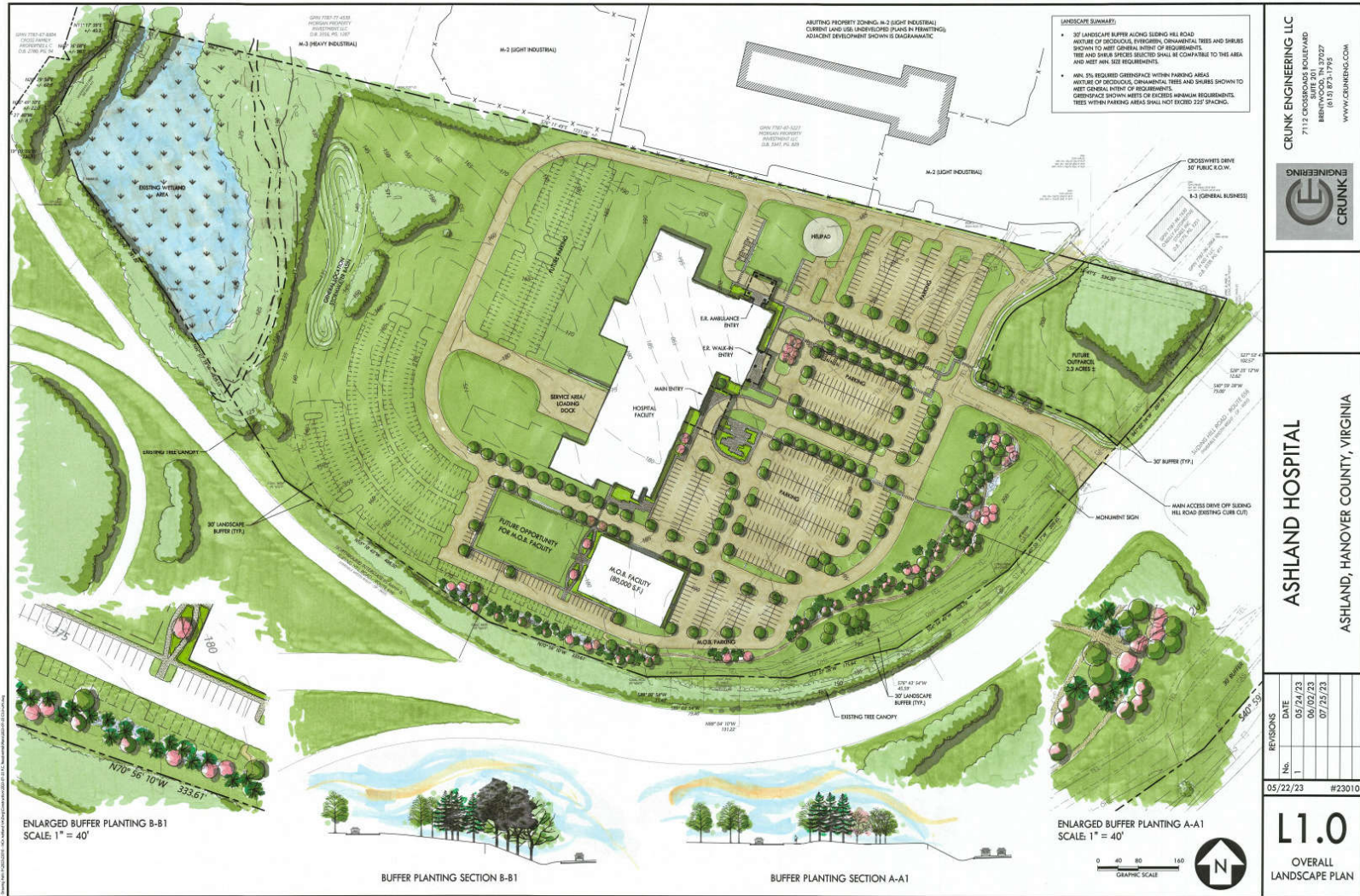


# Hospital Alternative





# Landscaping Plan



ENLARGED BUFFER PLANTING B-B1  
SCALE: 1" = 40'

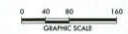


BUFFER PLANTING SECTION B-B1



BUFFER PLANTING SECTION A-A1

ENLARGED BUFFER PLANTING A-A1  
SCALE: 1" = 40'



CRUNK ENGINEERING LLC  
7113 CROSSWIND BOULEVARD  
BENTLEYWOOD, TN 37027  
(615) 875-1752  
WWW.CRUNKENGINEERING.COM



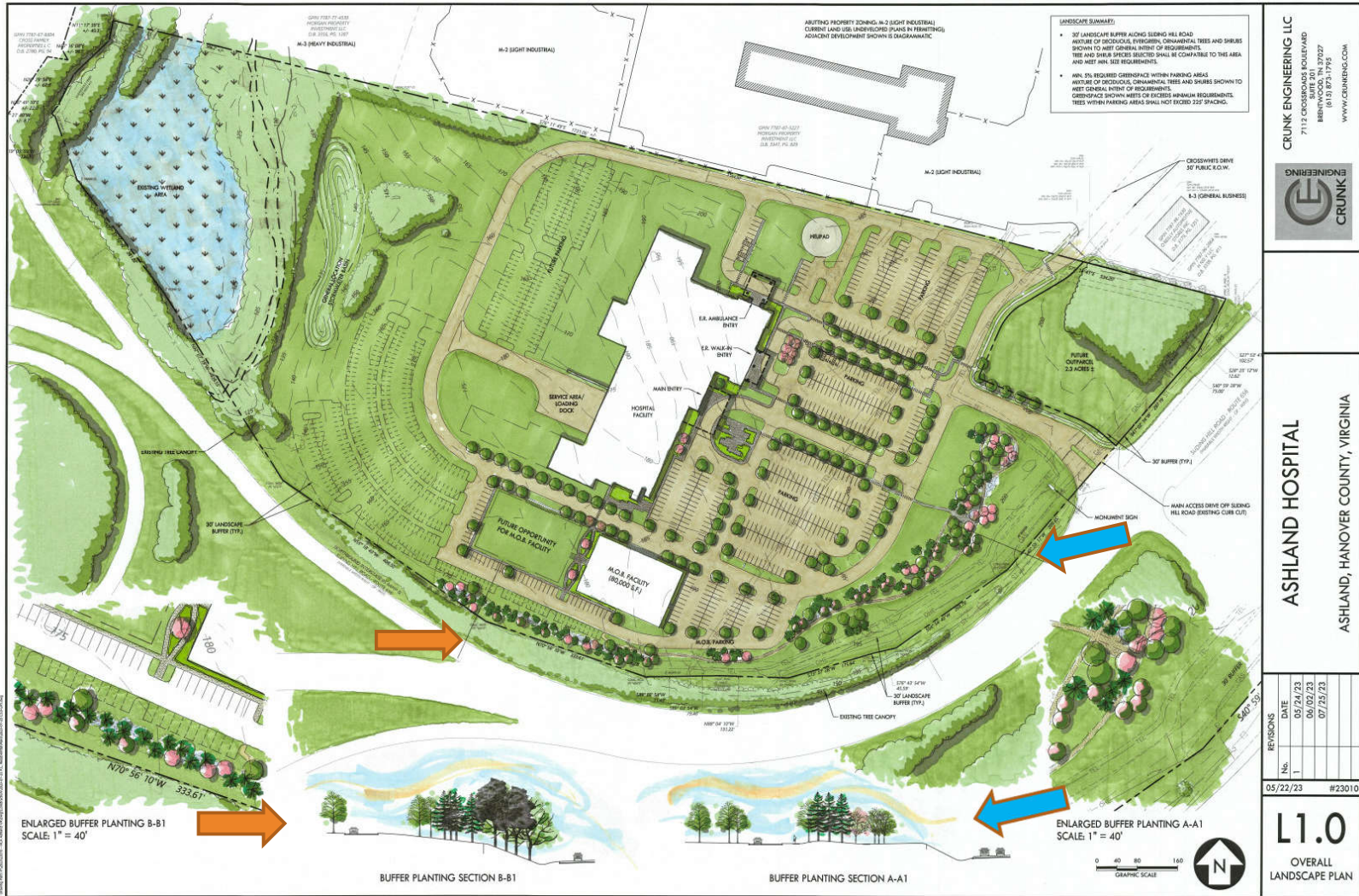
**ASHLAND HOSPITAL**  
ASHLAND, HANOVER COUNTY, VIRGINIA

REVISIONS	DATE
No. 1	05/24/23
	06/02/23
	07/25/23

05/22/23 #23010

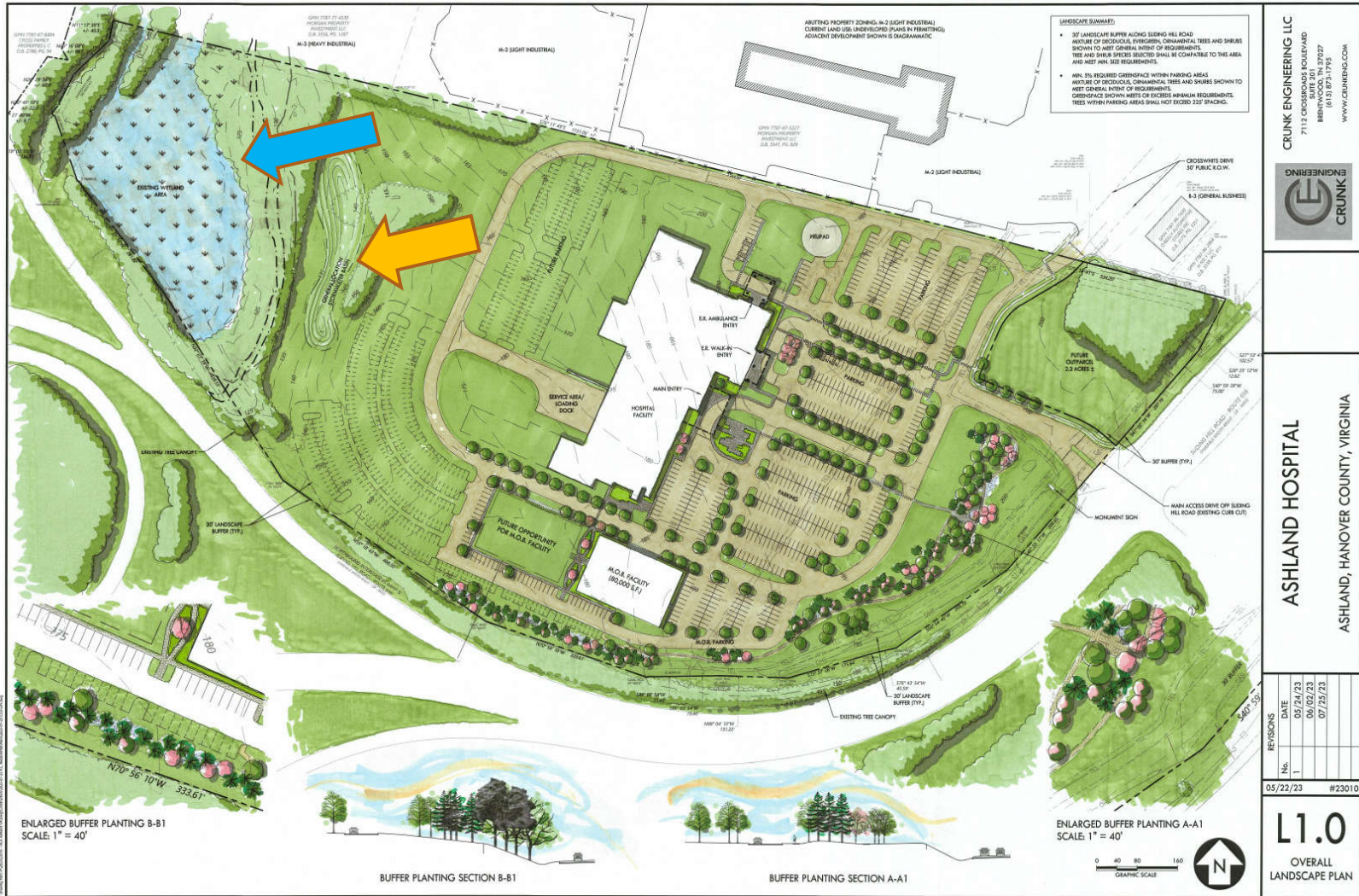
**L1.0**  
OVERALL  
LANDSCAPE PLAN

# Landscaping Plan

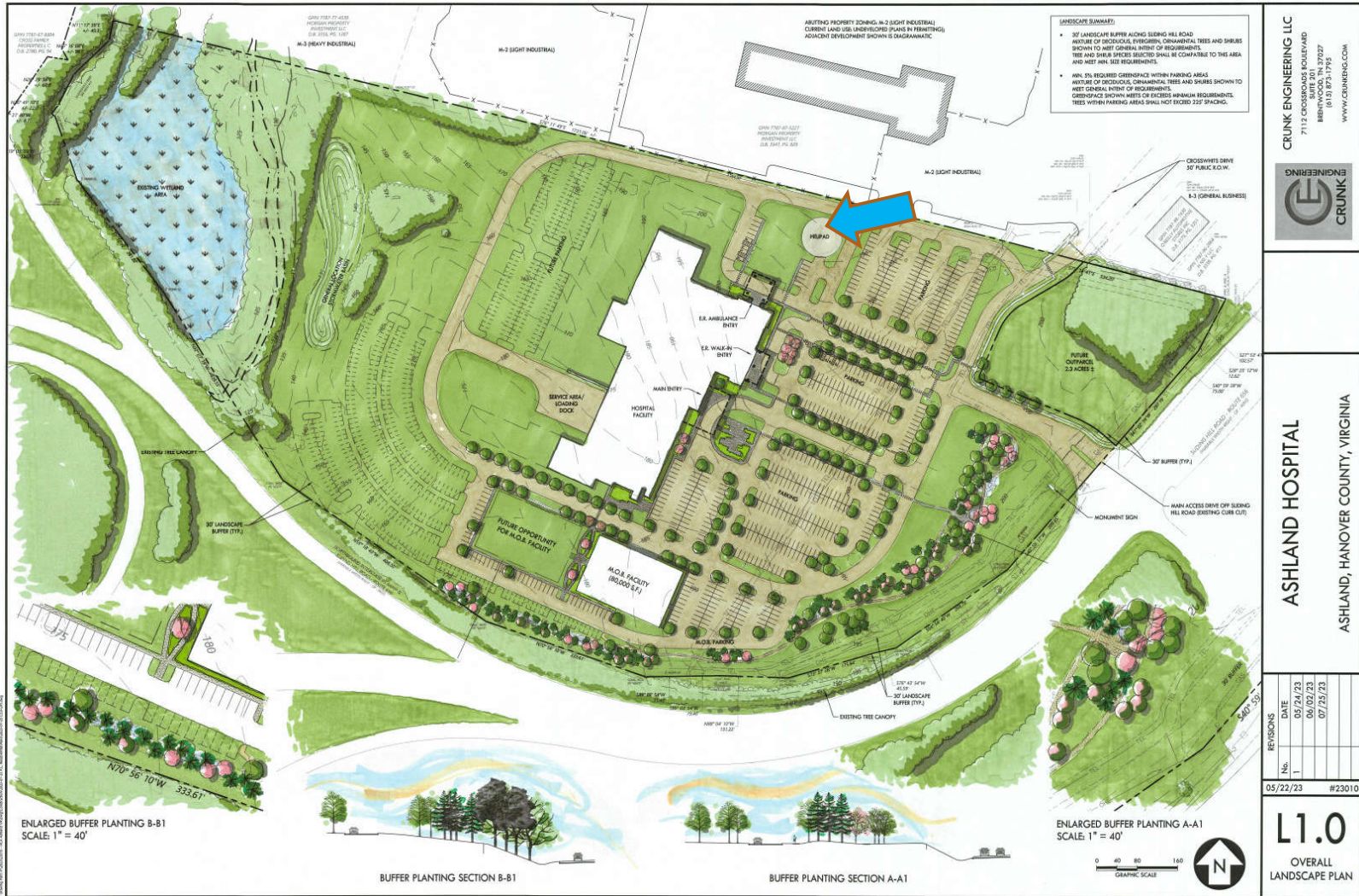


CRUNK ENGINEERING LLC  
7113 CROSSWITS DRIVE  
SUITE 300  
BERRYWOOD, TN 37027  
(615) 975-1752  
WWW.CRUNKENGINE.COM

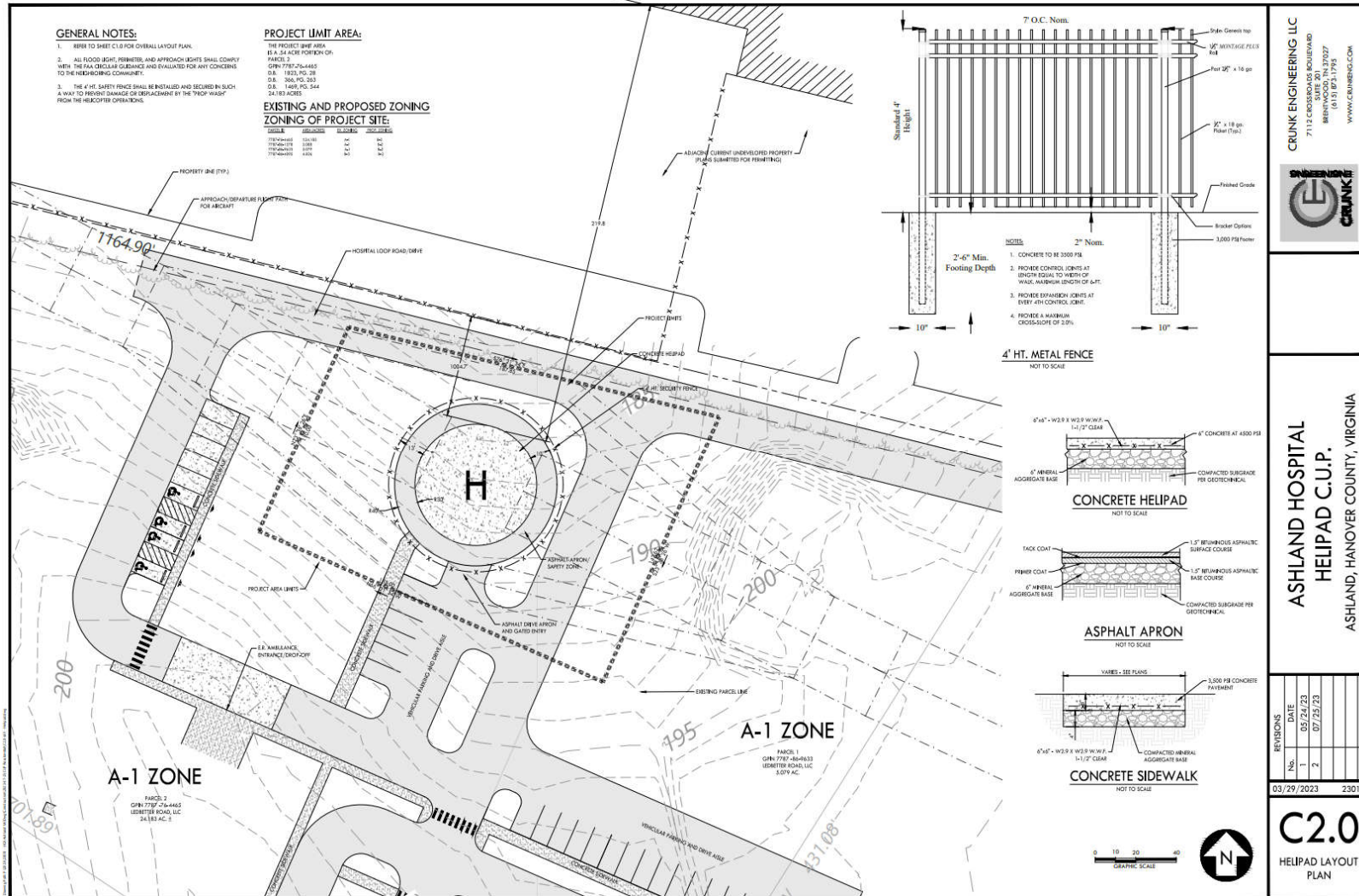
# Landscaping Plan



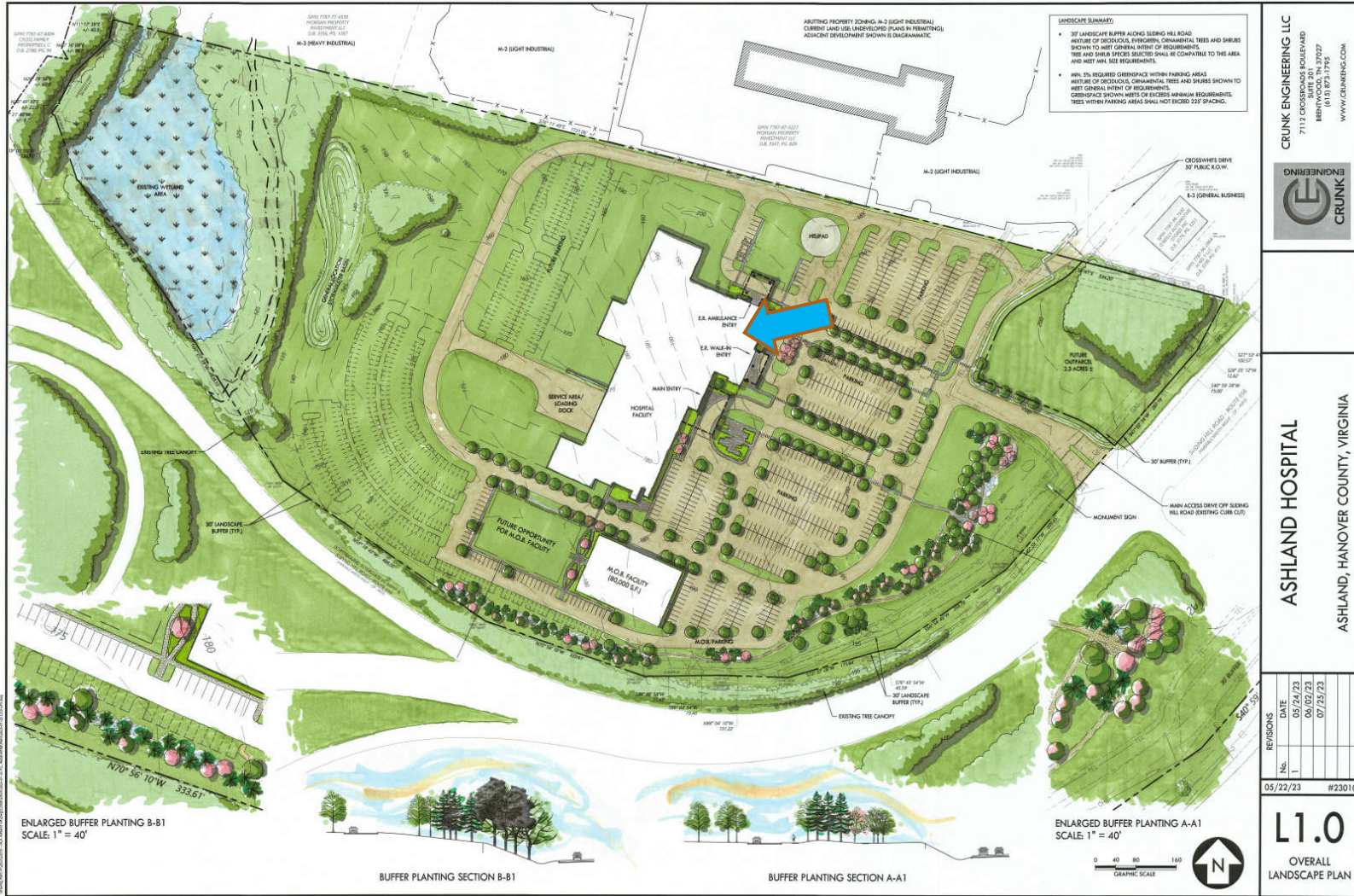
# Landscaping Plan



# Hospital Alternative - Helipad



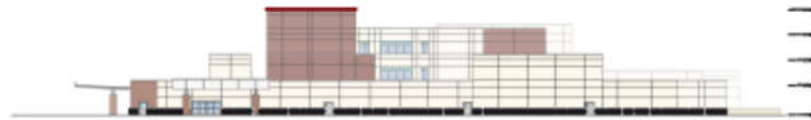
# Landscaping Plan



# Hospital Elevations



1 OVERALL WEST ELEVATION  
N75



2 OVERALL NORTH ELEVATION  
N75



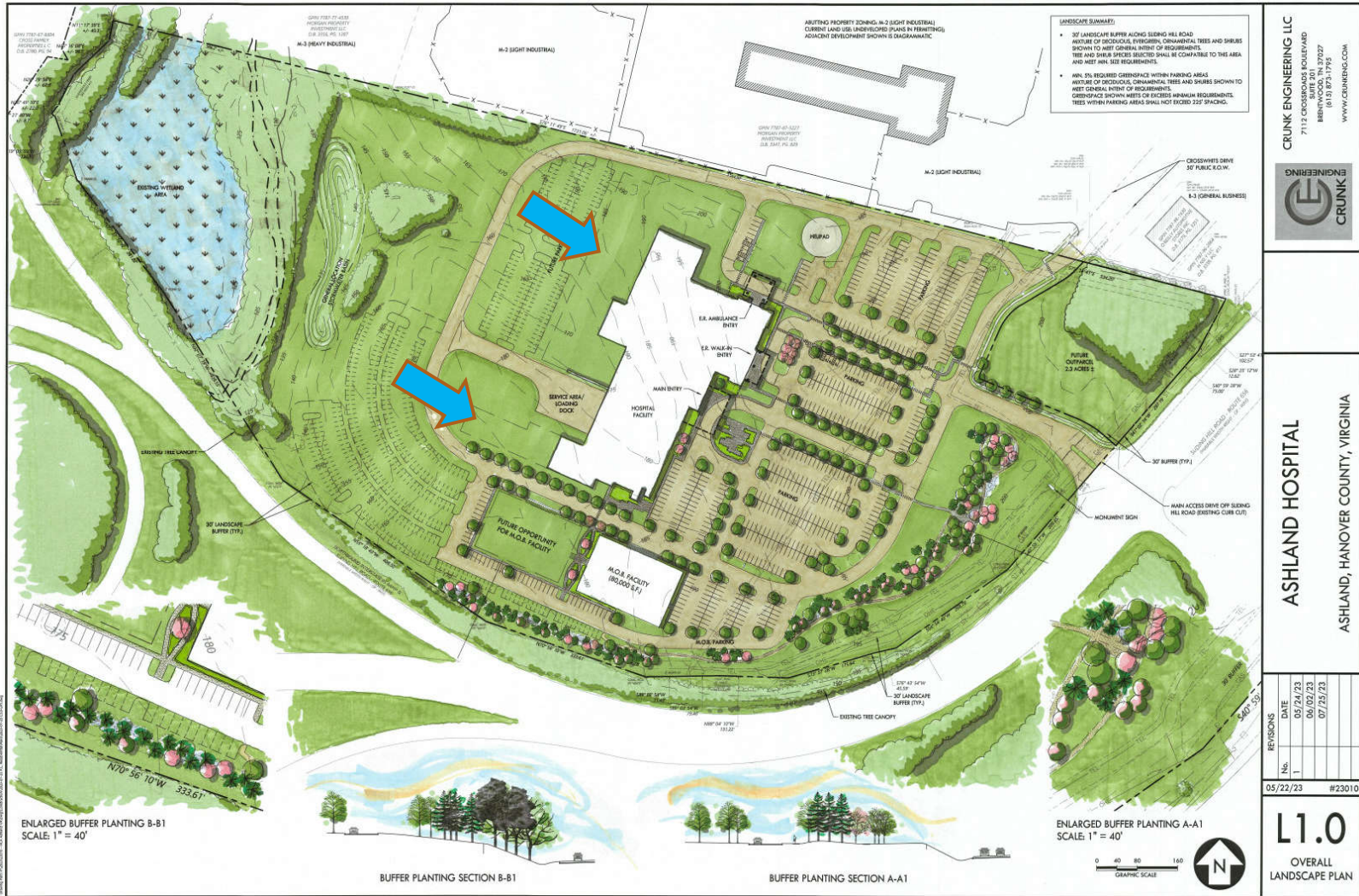
3 OVERALL EAST ELEVATION  
N75



4 OVERALL SOUTH ELEVATION  
N75

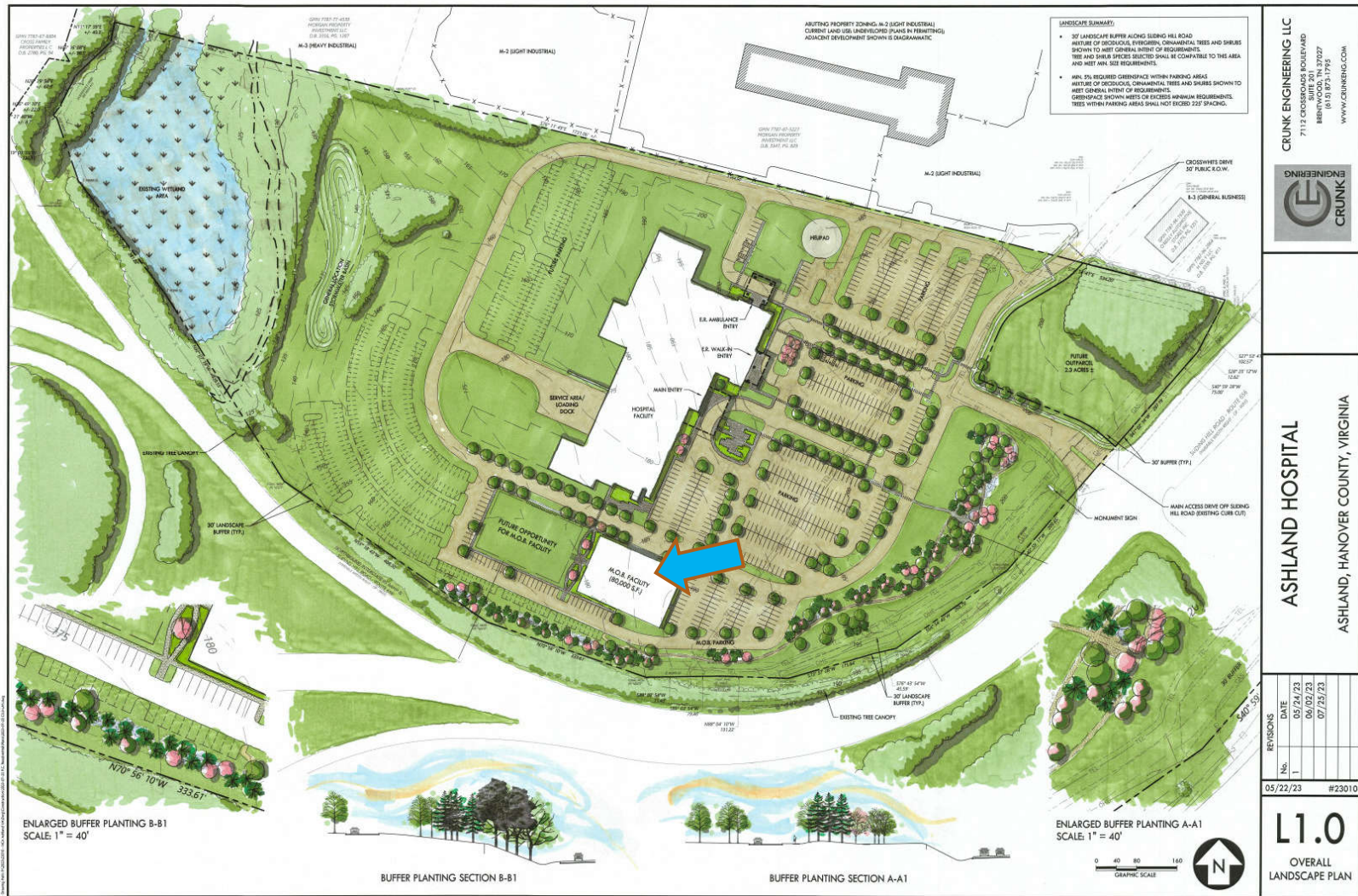
EXTERIOR MATERIAL LEGEND	
	BRICK
	BRICK
	BRICK
	BRICK
	GLASS
	GLASS
	GLASS
	GLASS
	GLASS
	GLASS

# Landscaping Plan

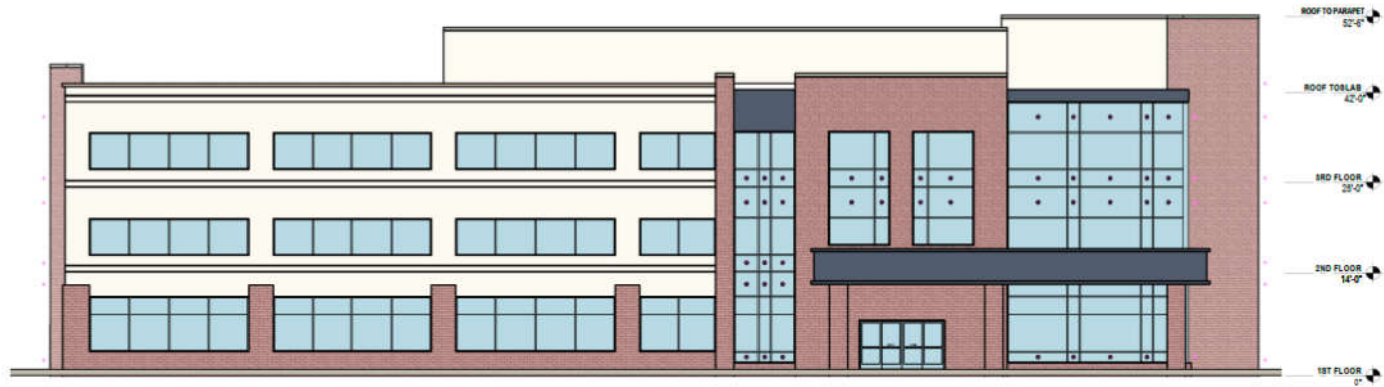




# Landscaping Plan

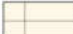
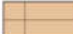







# Medical Office Building Elevations



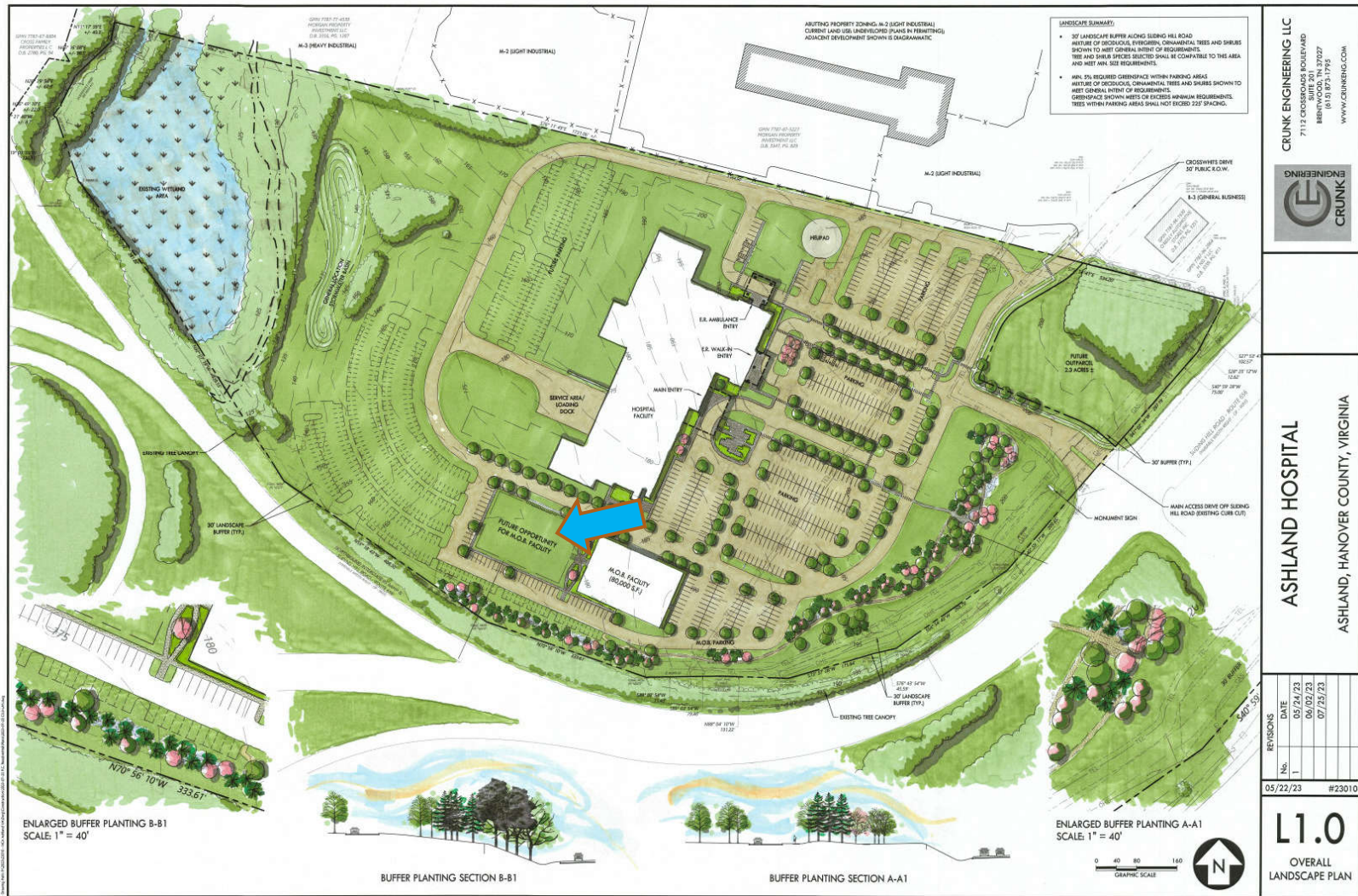
MEDICAL OFFICE BUILDING ELEVATION- EAST

**ESa** | **ASHLAND HOSPITAL**  
ASHLAND, VA |

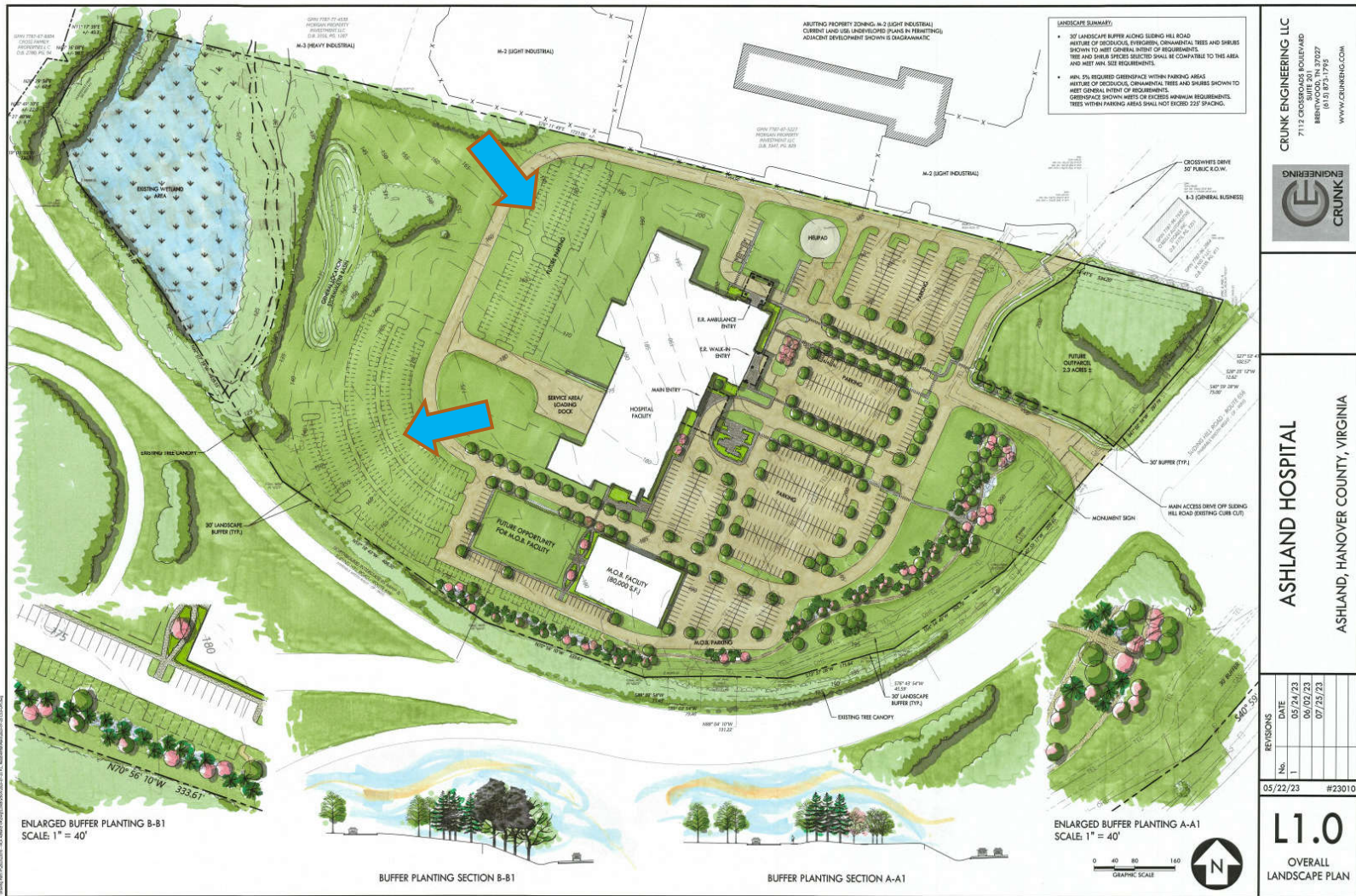
EXTERIOR MATERIAL LEGEND	
	EIFS COLOR 1
	EIFS COLOR 2
	BRICK
	VISION GLASS - 1" INSULATED
	SPANDREL #1
	CURTAINWALL SYSTEM W/ INSULATING GLASS
	STOREFRONT SYSTEM W/ INSULATING GLASS

A 2.1

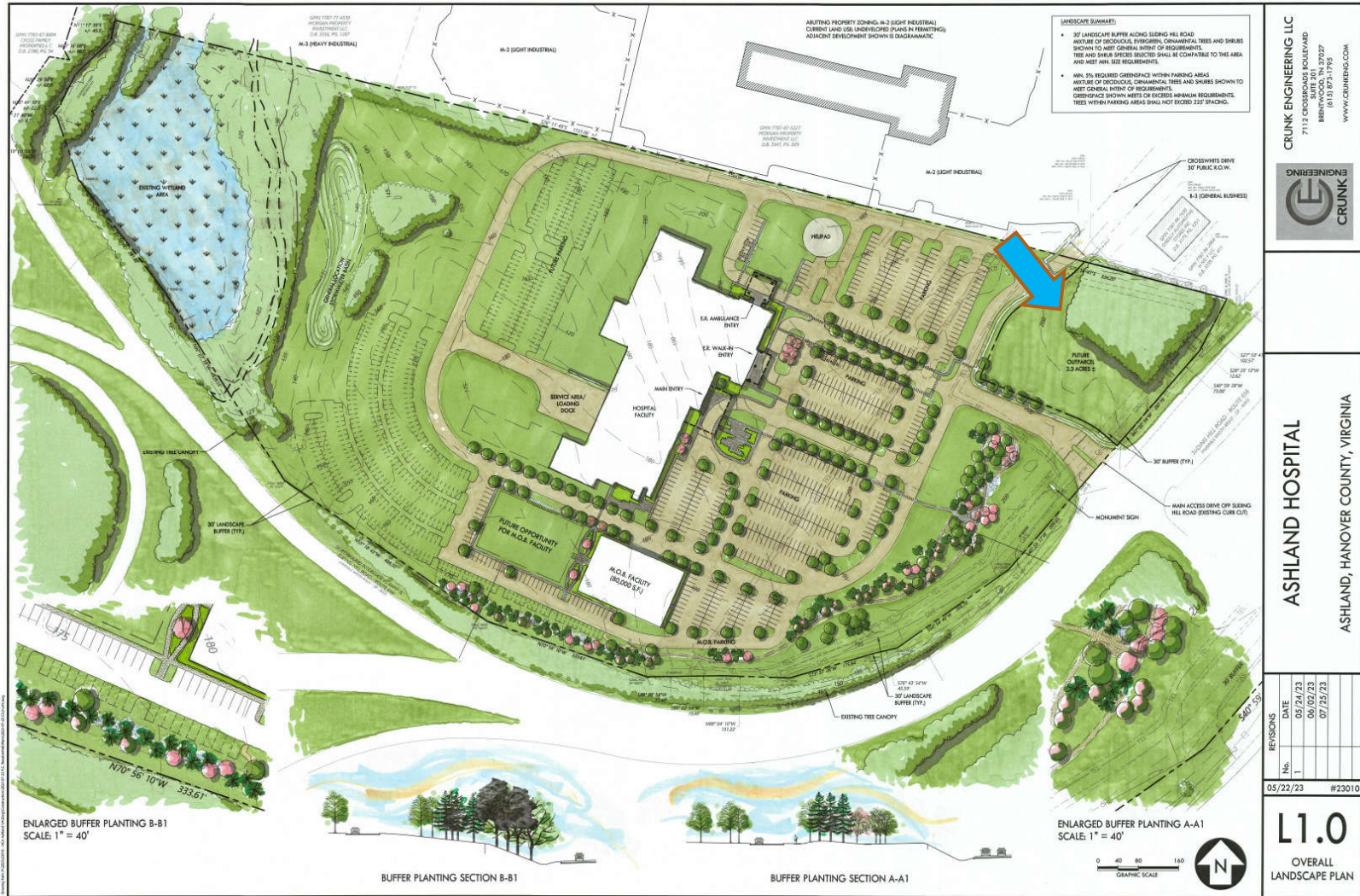
# Landscaping Plan



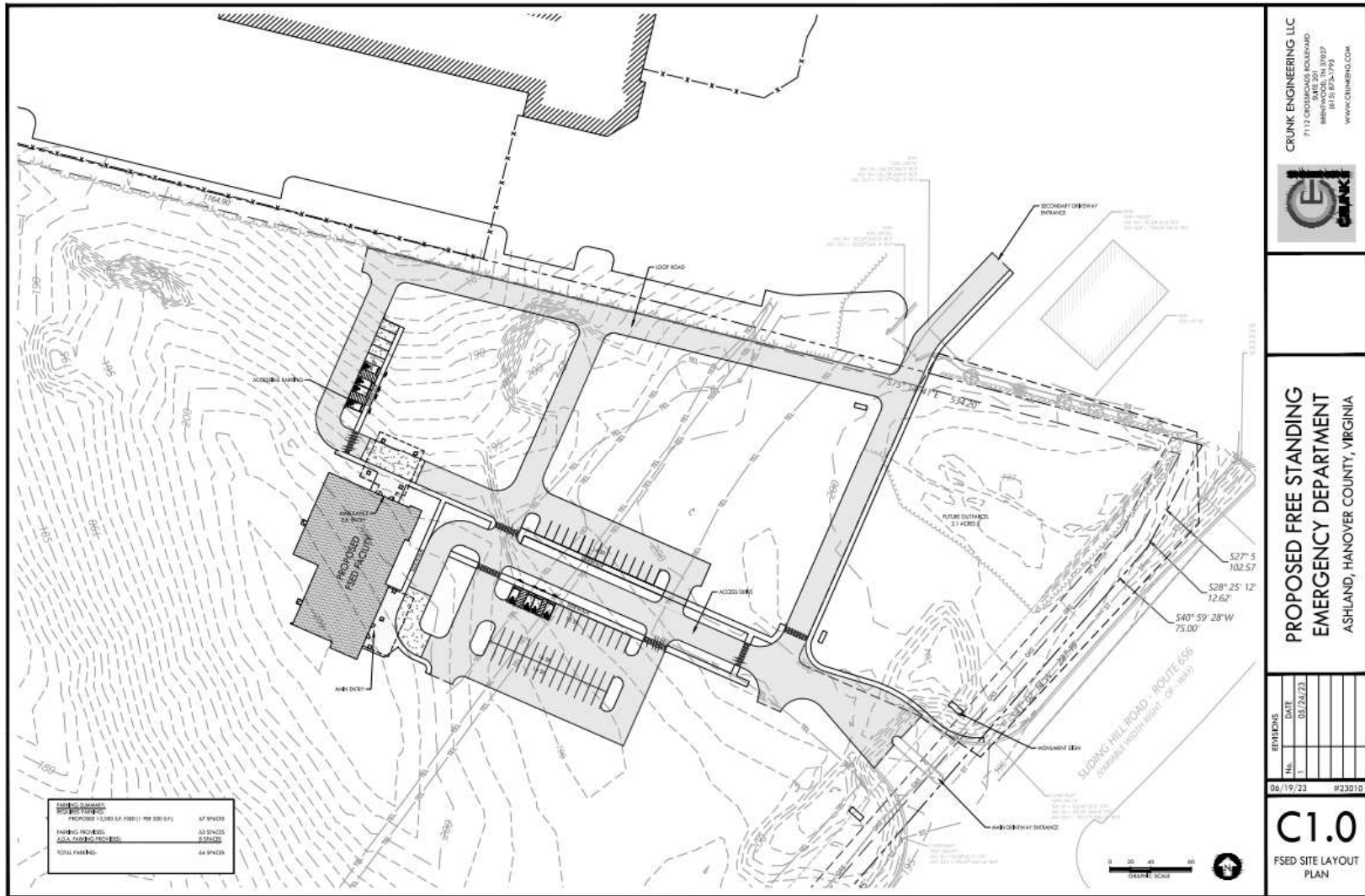
# Landscaping Plan



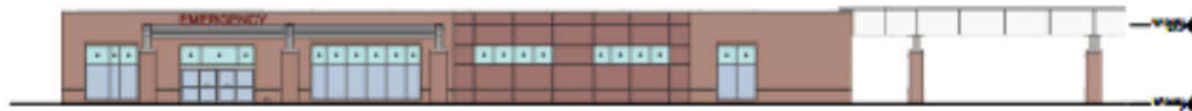
# Landscaping Plan



# Emergency Department Alternative



# Emergency Department Elevations



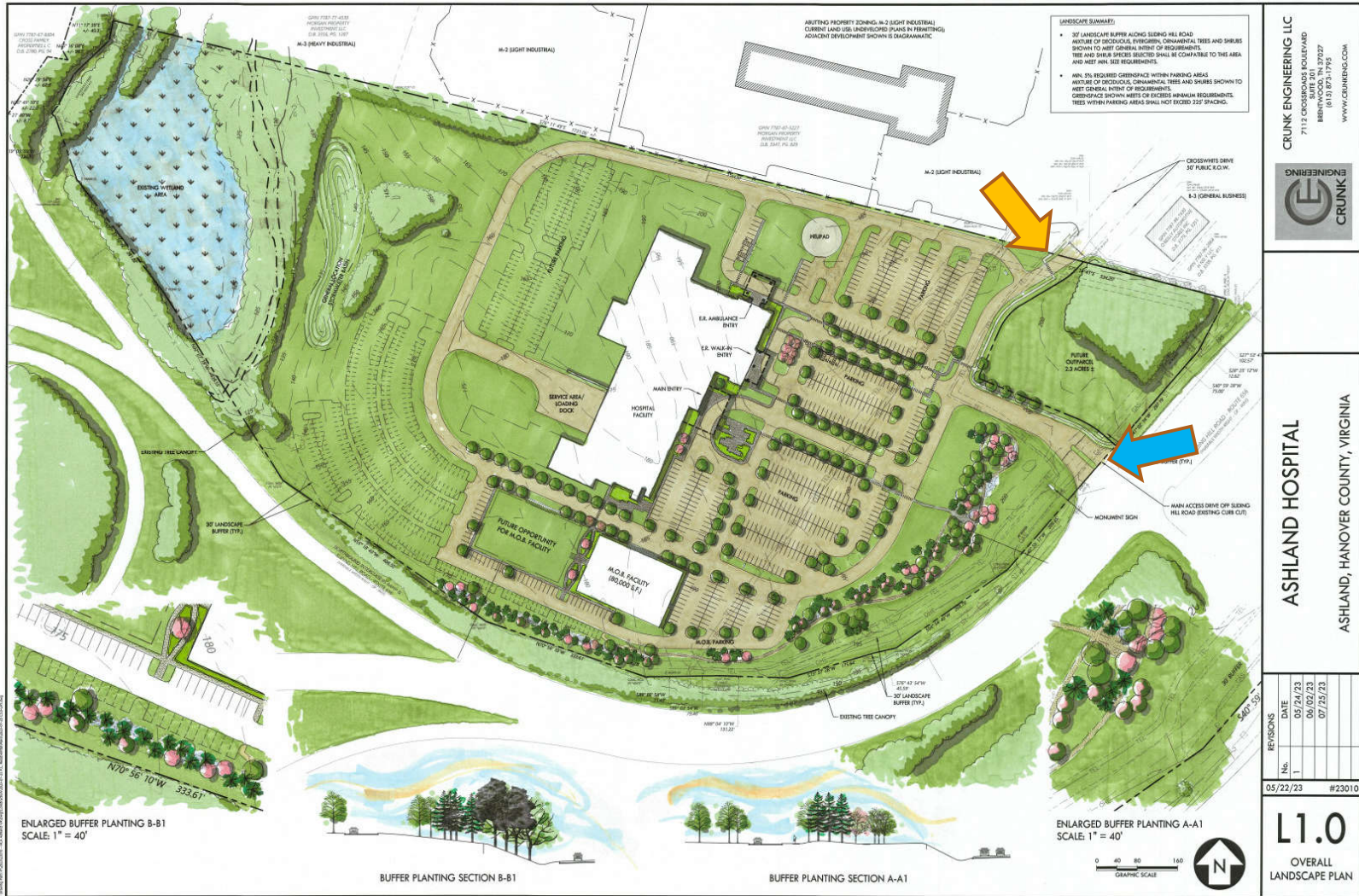
1 OVERALL EAST ELEVATION  
SCALE: 1" = 32'



2 OVERALL NORTH ELEVATION  
SCALE: 1" = 32'

EXTERIOR MATERIAL LEGEND	
	CLAY BRICK
	CLAY BRICK
	WOOD
	ALUMINUM PANELS
	GLASS
	EXTERIOR LIGHT FIXTURES
	EXTERIOR LIGHT FIXTURES

# Landscaping Plan



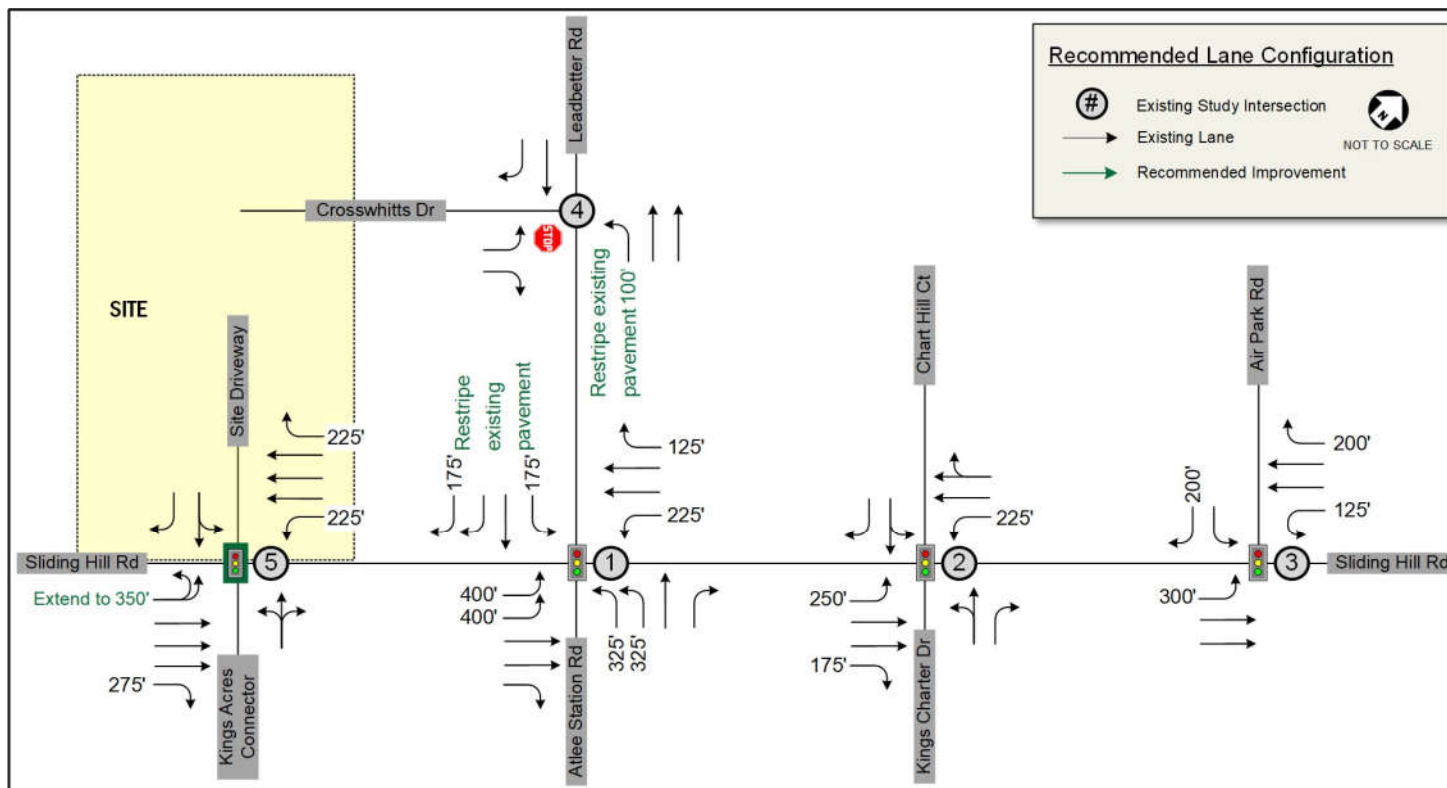


---

## TRAFFIC IMPACT ANALYSIS (TIA) SUMMARY

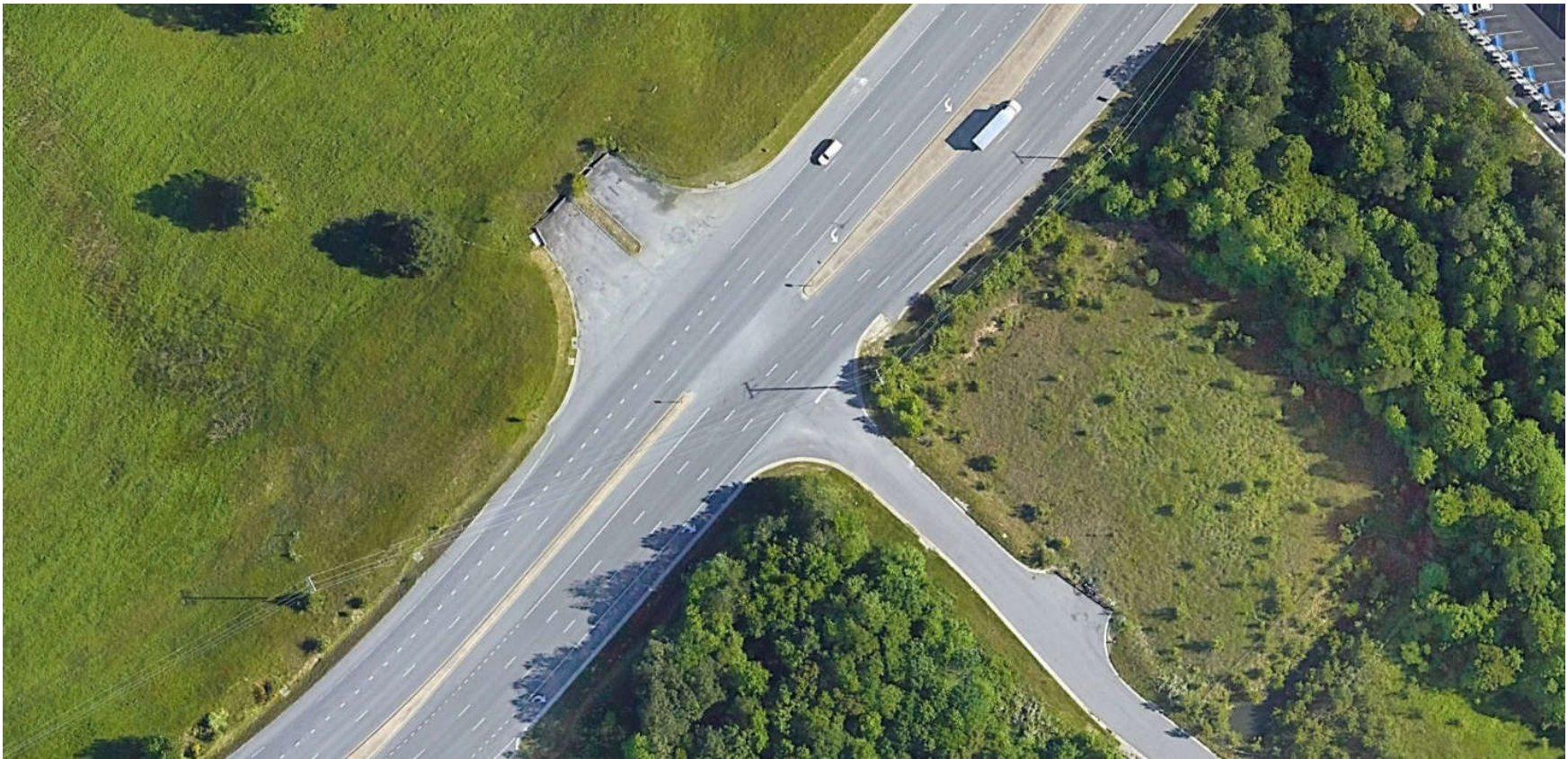
- Kick-off meeting with County and VDOT on February 14
- Submitted TIA to County and VDOT on March 29
- County's on-call traffic engineer agreed with the analysis and recommendations
- VDOT provided comments on June 23

# TRAFFIC IMPACT ANALYSIS (TIA) SUMMARY



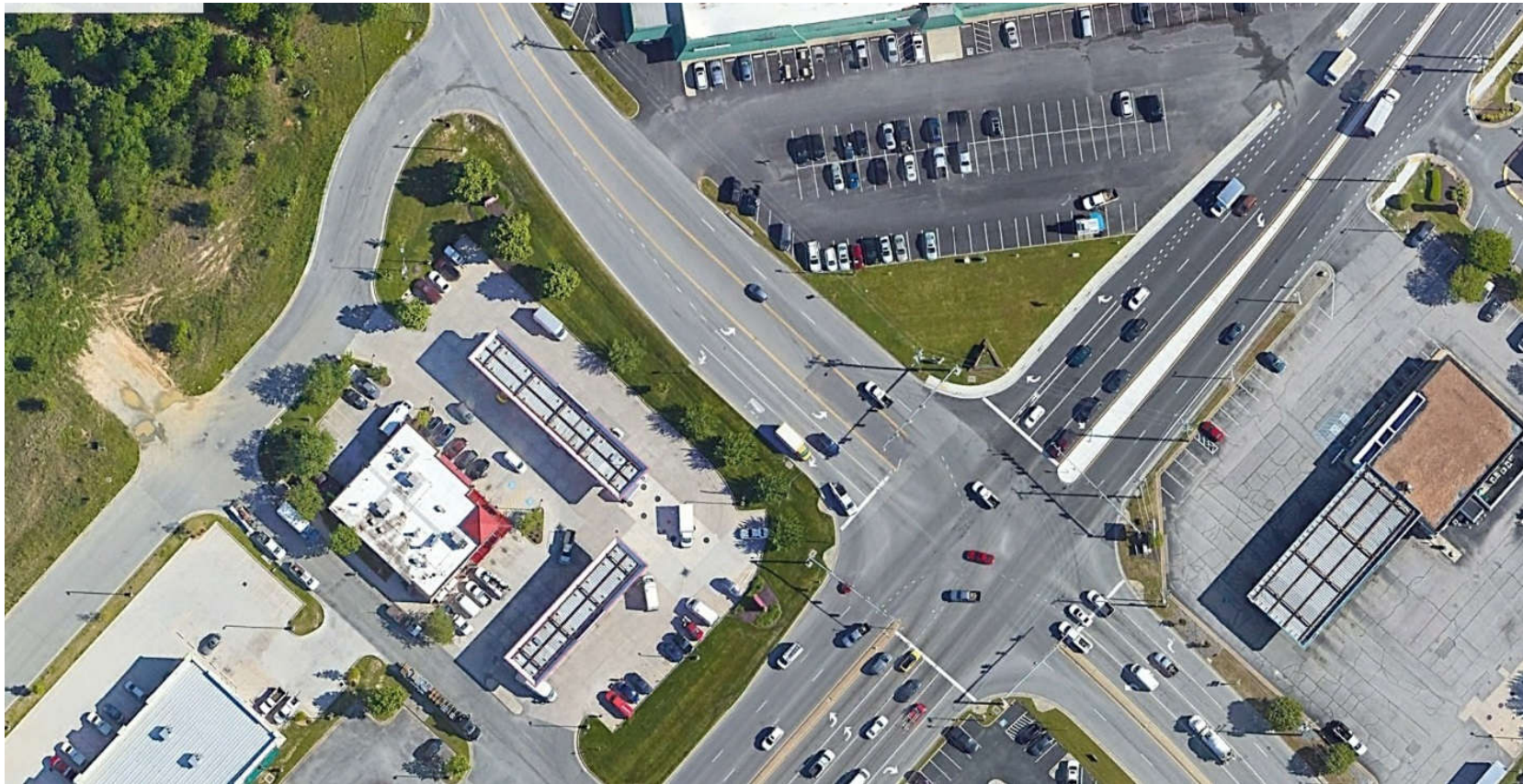
---

## PROPOSED IMPROVEMENTS AT SLIDING HILL ROAD DRIVEWAY

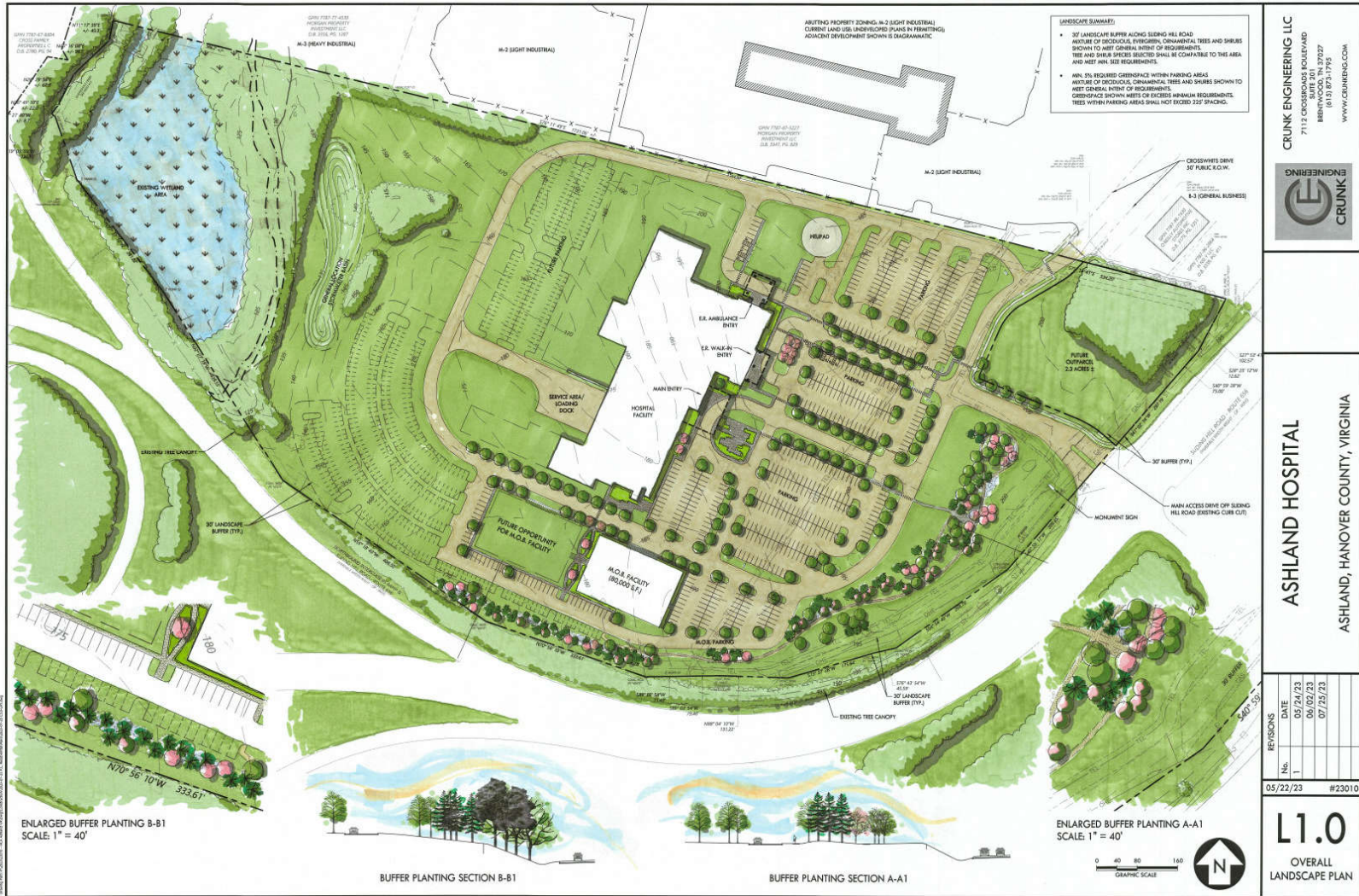


---

# PROPOSED IMPROVEMENTS TO INTERSECTION OF SLIDING HILL ROAD AT ATLEE STATION ROAD / LEADBETTER ROAD



# Landscaping Plan



**LANDSCAPE SUMMARY:**

- 30' LANDSCAPE BUFFER ALONG SLEING HILL ROAD. MIXTURE OF SPECIES, INCLUDING ORNAMENTAL TREES AND SHRUBS SHOWN TO MEET GENERAL INTENT OF REQUIREMENTS. TREE AND SHRUB SPECIES SELECTION SHALL BE COMPATIBLE TO THE AREA AND MEET MIN. SIZE REQUIREMENTS.
- MIN. 5% REQUIRED GREENSPACE WITHIN PARKING AREAS. MIXTURE OF SPECIES, ORNAMENTAL TREES AND SHRUBS SHOWN TO MEET GENERAL INTENT OF REQUIREMENTS. GREENSPACE BROWN AREAS OR EXCESS MANUALLY REQUIREMENTS. TREES WITHIN PARKING AREAS SHALL NOT EXCEED 22' SPACING.

**CRUNK ENGINEERING LLC**  
 7113 CROSSWIND BOULEVARD  
 SUITE 300  
 BERRYWOOD, TN 37027  
 (615) 975-1752  
 WWW.CRUNKENGINEERING.COM

**ASHLAND HOSPITAL**  
 ASHLAND, HANOVER COUNTY, VIRGINIA

REVISIONS	DATE
No. 1	05/24/23
	06/02/23
	07/25/23

05/22/23 #23010

**L1.0**  
 OVERALL  
 LANDSCAPE PLAN

ENLARGED BUFFER PLANTING B-B1  
 SCALE: 1" = 40'

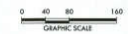


BUFFER PLANTING SECTION B-B1



BUFFER PLANTING SECTION A-A1

ENLARGED BUFFER PLANTING A-A1  
 SCALE: 1" = 40'



---

# QUESTIONS?

