



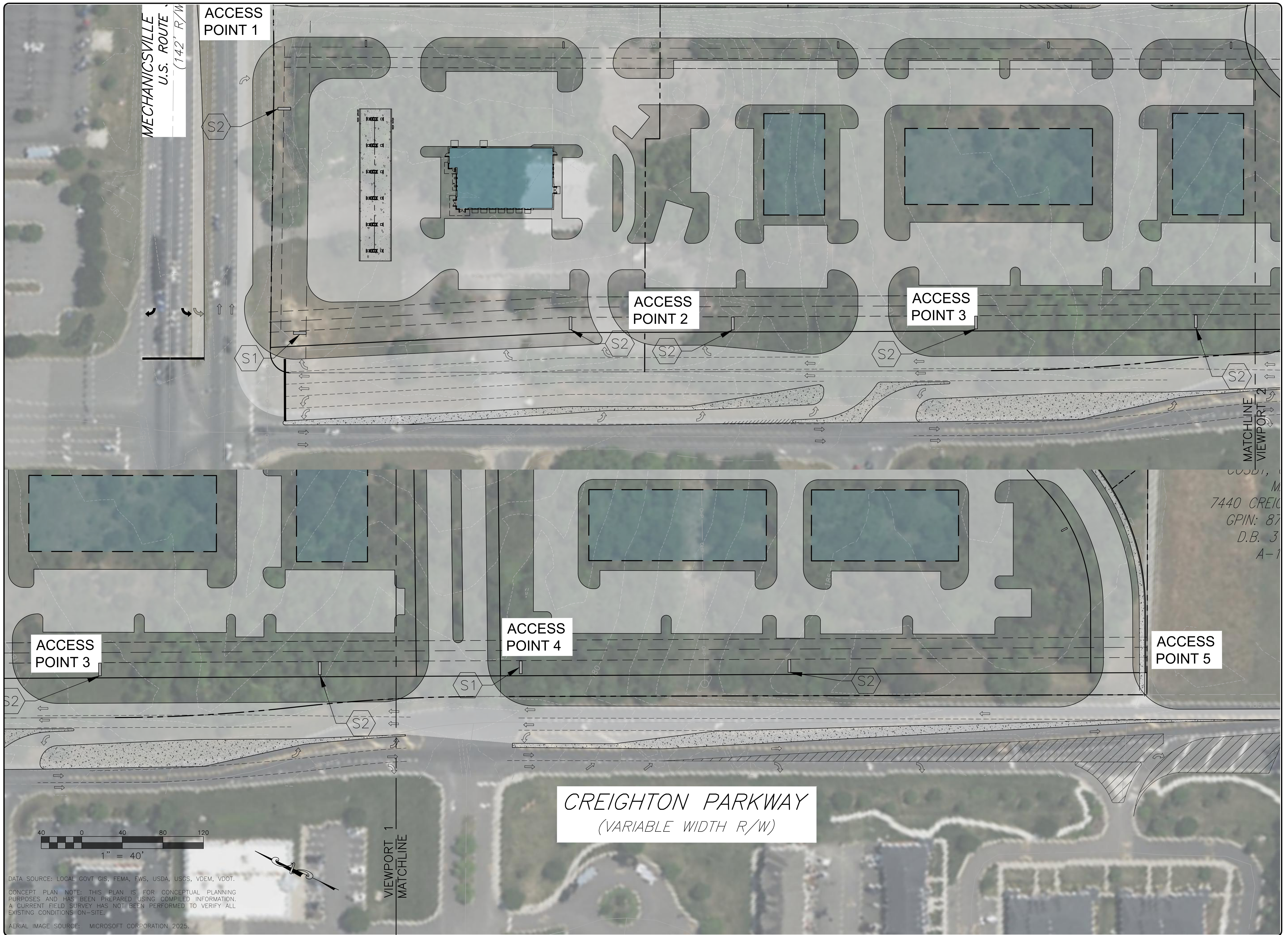
BALZER & ASSOCIATES
a Westwood Company

Roanoke / Richmond
New River Valley
Shenandoah Valley

balzer.cc | westwoodps.com

15871 City View Drive
Suite 200
Midlothian, VA 23113
804.794.0571

PRELIMINARY
NOT FOR CONSTRUCTION



MECHANICSVILLE
U.S. ROUTE
(142' R/W)

ACCESS
POINT 1

ACCESS
POINT 2

ACCESS
POINT 3

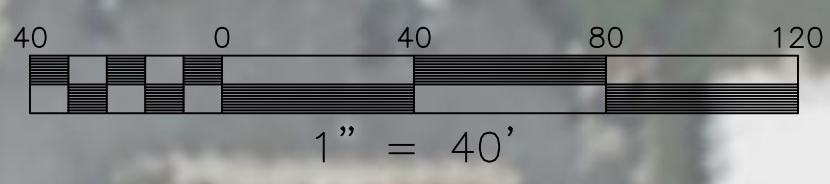
ACCESS
POINT 3

ACCESS
POINT 4

ACCESS
POINT 5

CREIGHTON PARKWAY
(VARIABLE WIDTH R/W)

7440 CREIGHTON PARKWAY
GPIN: 87
D.B. 3
A-1



VIEWPORT 1
MATCHLINE

MATCHLINE
VIEWPORT 2

DATA SOURCE: LOCAL GOVT GIS, FEMA, FWS, USDA, USGS, VDEM, VDOT.
CONCEPT PLAN NOTE: THIS PLAN IS FOR CONCEPTUAL PLANNING PURPOSES AND HAS BEEN PREPARED USING COMPILED INFORMATION. A CURRENT FIELD SURVEY HAS NOT BEEN PERFORMED TO VERIFY ALL EXISTING CONDITIONS ON-SITE.
AERIAL IMAGE SOURCE: MICROSOFT CORPORATION 2025

CREIGHTON PARKWAY
CONCEPTUAL ROAD IMPROVEMENT PLAN

DRAWN BY: AGM
DESIGNED BY: CMS
CHECKED BY: CMS
DATE: 09/22/2025
SCALE: 1" = 40'
REVISIONS:

EX-D
PROJECT NO. 56190055.00