

November 28, 2022

Kimberly M. Lacy  
Richmond Office  
(804) 956-4696 (direct)  
klacy@rothjackson.com

VIA U. S. MAIL

Interested and Adjacent Neighbors

Re: Patriot Towers at Gateway Centre  
101 and 1100 Gateway Centre Parkway

Dear Ladies and Gentlemen:

My firm is working with Patriot Gateway Centre Associates, LP in reference to a proposed development at 101 and 1100 Gateway Centre Parkway, as shown on the attached vicinity map (collectively, the "Property"). We are proposing to rezone the Property to R-MF with conditional use planned development to construct a multifamily residential development with a focus on enhanced common gathering and public spaces and recreational amenities.

To provide you with additional information and answer any questions, we have scheduled a virtual community meeting to be held as a Zoom meeting on December 13, 2022, at 6:00 p.m. If you wish to attend the virtual meeting, please go to our RVA Zoning website at <https://www.rvazoning.com>, go to "Find your Case", click on "Patriot Towers at Gateway Centre", and you will see the "Zoom Registration Link" for the meeting. **YOU MUST REGISTER IN ADVANCE BY DECEMBER 11<sup>th</sup> at 6:00PM TO ATTEND THE VIRTUAL MEETING. Once you register, you will receive an email with a link to the virtual meeting (zoom meeting).**

The RVA Zoning website also contains additional information about our rezoning request, and allows you the opportunity to leave questions or comments that will simultaneously be forwarded to our office and the Chesterfield County Planning Department.

**If you do not wish to participate, no further action is needed.** If no one RSVPs within 48 hours of the scheduled meeting, the meeting will be cancelled. If you have any questions or concerns, please feel free to reach out to me at [klacy@rothjackson.com](mailto:klacy@rothjackson.com) or (804) 956-4696.

Sincerely,



Kimberly M. Lacy

Enclosure

{01484906;v2}

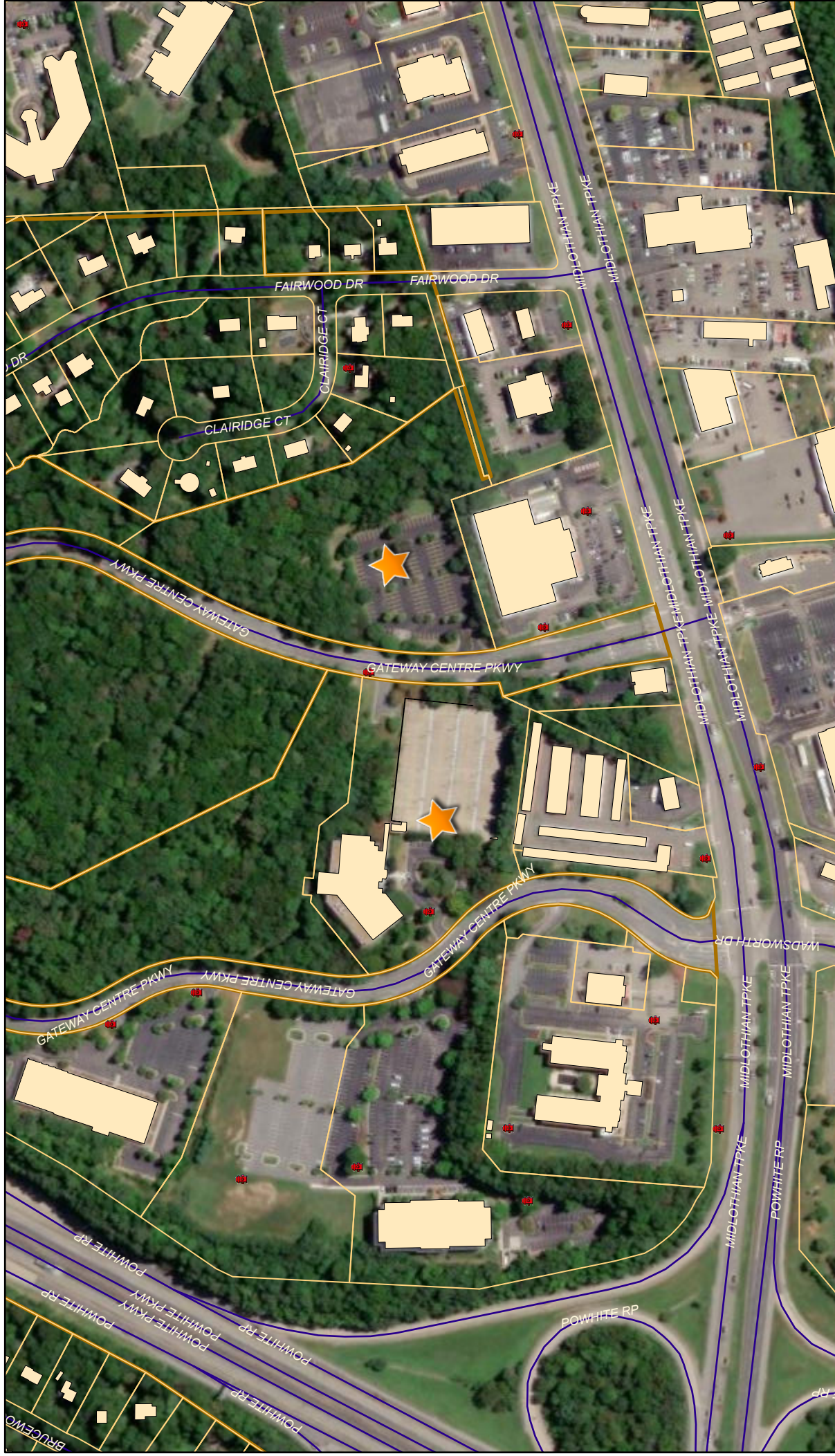
**RICHMOND**

1519 Summit Avenue, Suite 102, Richmond, VA 23230  
P: 804-441-8440 F: 804-441-8438

**TYSONS CORNER**

8200 Greensboro Drive, Suite 820, McLean, VA 22102  
P: 703-485-3535 F: 703-485-3525

# Patriot Towers at Gateway Centre



11/28/2022, 8:13:06 AM

1:4,514

0 0.03 0.06 0.12 mi  
0 0.05 0.1 0.19 km

-  Override 1
-  Fire Hydrants
-  Building Footprints
-  Building
-  Parcels
-  Subdivisions
-  Parcel GPIN Labels
-  Municipal Boundary

VITA, Esri, HERE, Garmin, GeoTechnologies, Inc., Maxar